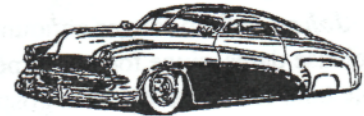




# MAMA Sez!

Volume 16, Issue 5

January, 2003



This is the newsletter of the **Maryland Automotive Modelers Association**

Johan Press Release	2
LA Auto Show Highlights	2
Car Acronyms	3
Blue Oval Bits	4
Chevy Thunder	5
Big Boys toys!	5
Free Stuff!	5
This 'n That	6
Win This Car!	7
Tuners!	7
Trumpeter Novas!	8
Model Buffet	10
Aussie Dodge!	12

## 2003 Meeting Schedule

The meeting reservation system has changed, and will be discussed at an upcoming meeting. All meetings are scheduled for the third Saturday of the month, but will be **confirmed quarterly**, and are subject to change prior to confirmation. Do **NOT** assume meeting dates - confirm them with a club officer!

- ☞ January 18th
- ☞ February 15th
- ☞ March 15th

**Incident weather phone number: (301) 474-5255**

## Back to Work—the Bills are Here!!

Last month's meeting featured a very good turnout of MAMA members, especially considering the ready availability of food in great quantities!! Thanks not only to everyone who shared with the club, but also to the *lovely ladies of MAMA* for doing such a great job of presenting it.

Unfortunately, we had some **bad news** that dampened the festive holiday spirits. Ron Bradley's associate, **Ron Coltrane**, has been diagnosed with **lung cancer**. Seemingly as a result, his



employer told him that his services are no longer required (*he let him go!*). Ron is currently undergoing treatment, and is attempting to maintain his health care insurance payments. In the *spirit*

*of giving*, the club *dedicated* the *entire raffle* and *door box money* for the month, **\$700.00**, to Ron to use as necessary. Thanks to everyone for their generosity! We also discussed *sponsoring a special auction to raise additional funds in February*. So, *please bring your donations, wallets,*

*and generosity!*

**Lyle Willits** returns with another of his now standard **Custom Rod Modeler covers**.

The raffle brought in **\$110.00 (plus \$590.00 from the box!!)**. I would like to thank the following people this month: **Irv Arter, Bruce and Duncan Black, George Bojaciuk/GMP, Brad, Ron Bradley, Mike Hemp, Ron Hamilton, Phil Jones, Rich Meany, Walt Rook, George Schulman, Ken Shanks, Rex Turner, Ray Wickling, and Replicas & Miniatures Company of Maryland.** 🏠

## C7 Stillborn!

The failure to resolve a legal dispute which pitted **Lutz** and **General Motors** against company co-founder **Briggs Cunningham III**, ended all hopes of production, said Cunningham CEO Jack

McCormack. The company halted operations and development of the **Cunningham C7** in late September, two weeks after Briggs Cunningham III sued GM, Lutz and other company principals. Cunningham filed suit in September in

U.S. District Court in Covington, Ky. alleging that he was misled and was forced to sell his 775,000 shares in the car company at \$1 each to pay off a loan he used for startup capital. GM paid \$5 a share and eventually invested \$2 million in the company. 🏠

MAMA Sez is the official monthly publication of the Maryland Automotive Modelers Association. All rights reserved. Articles are the property of MAMA (*unless otherwise noted*), and may be reprinted with proper credit given. Any correspondence, or contributions should be sent to: Timothy Sickle, 15905 Ark Court, Bowie, Maryland 20716.



## Press Release

**NOV 2, 2002:**

*Johan* will no longer announce release dates, since too many people take estimated dates as gospel. I can announce that we will begin producing kit #EZ-201, the *promo based Chrysler Turbine car*, 3 weeks from today. Chrysler Turbine car Advanced shots were available at the KAM Fall Classic for editorial review. The EZ series is intended to help return fun to the hobby. These simple curbside kits have no engines, but are very well detailed. They can be assembled in minutes. Because there are 2 schools of thought on entry level kits, Johan will offer them in white, for those who like to paint, and cast in color for those who would prefer to skip the painting process. The turbine car is offered in either white or a caramel brown, very close to the color of

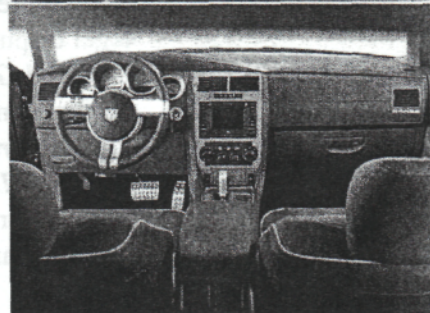
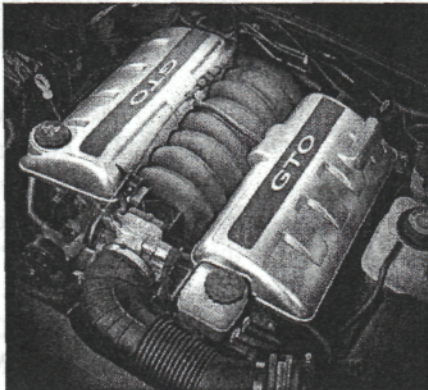
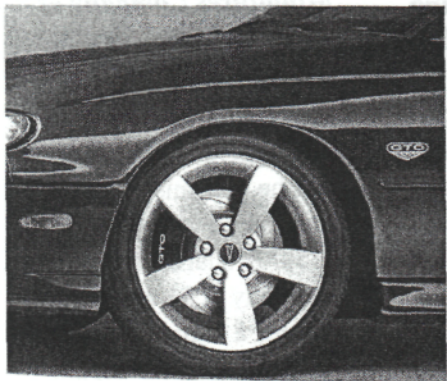
the car in Chrysler's museum. A new set of decals enables the builder to build the race car. EZ-202 *1975 Oldsmobile Cutlass* was also available at the KAM Fall Classic. Like the Turbine car, it will be molded in white or color. The first ones will be red with a black interior; the second batch will be molded in dark blue with a medium blue interior. New decals will include licenses, gauges, scripts, and body graphics. JC-101 *1959 Rambler wagon*: As soon as Turbines and Cutlasses are sold, the first of the *Curbside Cruisers* will be released. Based on the promo, the wagon will include surfboards from the hearse kit, luggage from the 1964 Rambler, as well as fender skirts, spotlights, and moon discs. A red light will be added for emergency vehicles, as well as a roof mounted taxi sign. A new set of decals will include seahorse flames, a custom full side wood grain, stock wood

grain spear, scripts, licenses, stock seat patterns, custom seat patterns, and taxi, police, and ambulance graphics. All Curbside Cruisers will be molded in white styrene. JC-104 *1959 Dodge Custom Royal*: Because of slow response from GM, I have decided to re-release the Dodge Custom Royal earlier than planned. **NOTE:** No date is set, but test shots have been run which could have been viewed at the KAM Fall Classic. 911 Series Promos: Also planned for limited release in 2003 will be the following promos, available only from *Accucast*: *1959 Rambler ambulance*, *1956 Olds Fire Chief*, *1956 Olds Arizona Police*, *1956 Pontiac Nassau County Police*, *1956 Pontiac California Highway Patrol*, *1959 Dodge Missouri Police*, *1955 Pontiac Fire Chief*. Thank you for your patience and support.

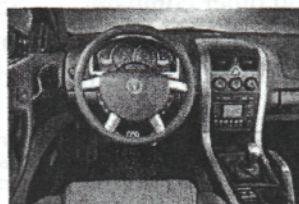
Sincerely,

*Okey Spaulding, Johan Models LLC*

## LA Auto Show Highlights!



Return of the GTO!



The Dodge Magnum (see This 'n That!)



## Car Acronyms, Circa 2002 (Part 1)

I found these on the Internet, and thought you guys would enjoy another dose of them. This month, we will focus on imported brands, and maybe next month, domestics. Enjoy!

### ACURA

Another Crappy, Useless, Rotten Automobile  
Asia's Curse Upon Rural America

### AUDI

Automobile Under Demonic Influence  
Another Ugly Deutsche Invention  
Always Undermining Deutsche Intelligence  
Automobile Unsafe Designs, Inc.

### BMW

Break My Window  
Beautiful Masterpieces on Wheels  
Barely Moving Wreck  
Big Money. Why?  
Bring More Wrenches  
Brings Me Women  
Brings More Women  
Broke My Wallet



### FIAT

Feeble Italian Attempt at Transportation  
Forlorn, Old, Ratridden Dustbin  
Fork Over Repair Dough  
Fouled Out Re-done Dodge  
Frequent Overhaul, Rapid Deterioration  
Free Or Reduced Drastically  
Frequent Opinion: Really Disappointed  
Fumes and Odors Readily Detectable  
Funny Old Rattling Dump

### GMC

Get More Chicks  
Gets Mechanics Crazy  
Gods Mechanical Curse  
Great Motor Car

### HONDA

Hang On, Not Done Accelerating  
Hallmark Of Non-Descript Automobiles  
Hallmark Of Non-Destructible Automobiles

### MG

Money Guzzler

### MGB

Might Go Backwards

### MGF

Might Go Forward

### MIATA

My Intention: Always To Accelerate

### PORSCHE

Proof Of Rich Spoiled Children Having Everything

### SAAB

Sad Attempt At Beauty  
Sorry Auto, Always Broken  
Shape Appears Ass-Backwards

### SUBARU

Screwed Up Beyond All Repair Usually

### TOYOTA

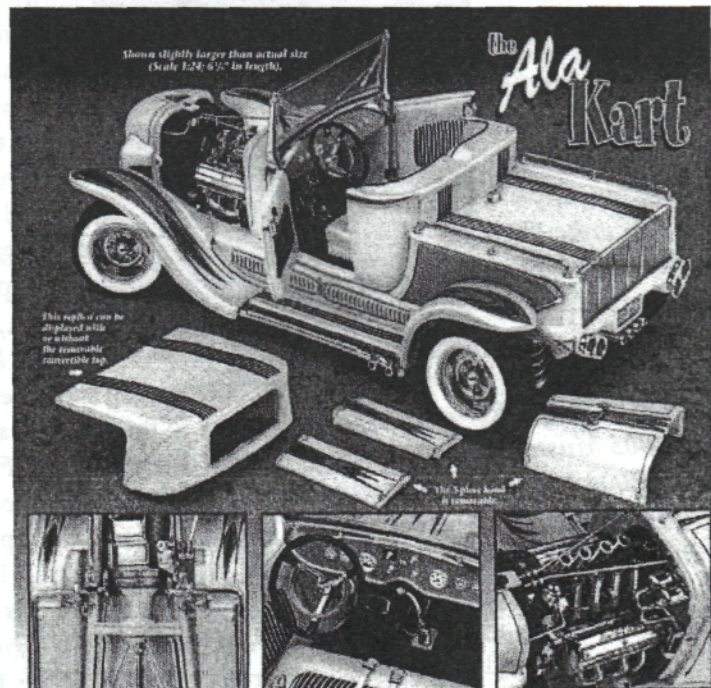
Torturous On Your Old Tired Ass  
The One You Ought To Avoid

### TRIUMPH

This Really Is Unreliable Man, Please Help!  
Tried Repairing It Until My Parts Hurt!

### VOLVO

Very Odd Looking Vehicular Object



How about a diecast version of the Ala Kart?! Thanks to Danbury Mint for this one!



## Blue Oval Bits

***It's Alive!*** Ford execs showed a **running prototype** of the **Ford GT Vehicle five months after car gets corporate green light**. Since May, a **"Dream Team"** of 35 hand-

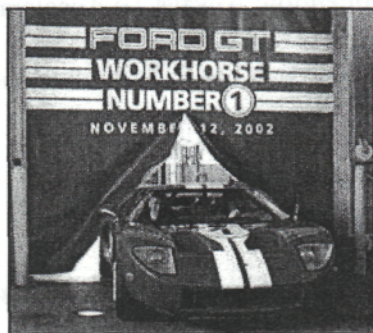
picked engineers have put in long hours to see that the first three cars get built in time for the centennial celebration in **June, 2003**. **Customer Ford GTs will not be available until**

**2004**; the company plans to build just 4500 total. Tight schedules required the engineers to use about 15 percent off-the-shelf hardware, including the **steering column** from a **Ford Focus**. The produc-

tion car gets an aluminum body, and carbon fiber hood to save weight. It'll be powered by an aluminum version of the company's **5.4-liter dohc V8**, supercharged to produce **at least 500 hp.** in the GT, and will sell for **at**

**least \$100,000.....Retro 'Stang!** The **2005 Mustang**, due to market in fall 2004 (*a delay from original plans that had the car arriving next spring as a 2004 model*) is gonna have a real retro look, if these pics are any indication! Aluminum may be used in place of sheet molded composites for

hood, trunklid and ground effects on some models. the DEW platform is the chassis of choice (think **Lincoln LS**, **Jaguar S-Type**, and **Ford Thunderbird**). A V-6 will still be available, while V-8 power will come from the **260-hp 4.6-liter** found in today's

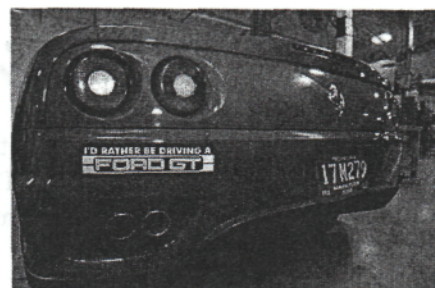


Mustang, but engineers are busy boosting the engine's output into the **280-hp range**. SVT Cobras will pack a higher-output 4.6-liter V8—but the next Cobra could belt out **400 horses**. SVTs

are also rumored to be in line for **F1-style paddle shifters** linked to a **six-speed trans**. Ford will show the Mustang at the Detroit auto show in January, and begins making final plans for a showroom debut timed to coincide with the **40th anniversary** of the splash the original made back in 1964. Should be easy pickings, since GM gave up the ponycar fight....**More doors!** Ford Motor

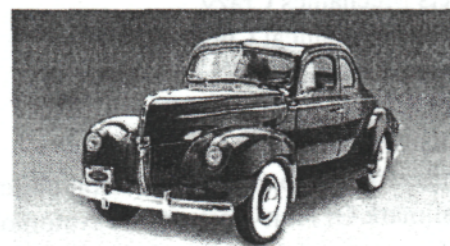


Co. is adding **small rear-cabin doors** to the regular cab model of the redesigned **2004 Ford F-150** (*its first redesign since 1997*). Hence, the two-door pickup will be no more at Ford. They will call the feature an **"access panel."** And, while on the subject of Ford trucks, Ford used the Toyota Tundra pickup a benchmark when



?!?

they designed a **new multivalve 5.4-liter V-8** for the next-gen F-150. Ford's Triton powertrain is the only three-valve-per-cylinder V-8 truck engine on the market, delivering 300 hp. It's gonna cost the company, though, to the tune of about \$485 million. The 2004-model F-150 is scheduled to go on sale late next summer....**Eugene T. (Bob) Gregorie**, **Ford Motor Co.'s first design chief and creator of the Lincoln Continental**, has died. He was 94. Mr. Gregorie **also designed** what would become the **1949 Mercury**, which was driven by James Dean in the classic movie "Rebel Without a Cause," and the **1936 Lincoln-Zephyr**, which the Museum of Modern Art in New York called "the first successfully streamlined car in America." **Mr. Gregorie**, with Edsel's guidance, **designed every Ford, Mercury, Lincoln-Zephyr, Lincoln and Ford truck and tractor produced between 1935 and 1945.** 🚗



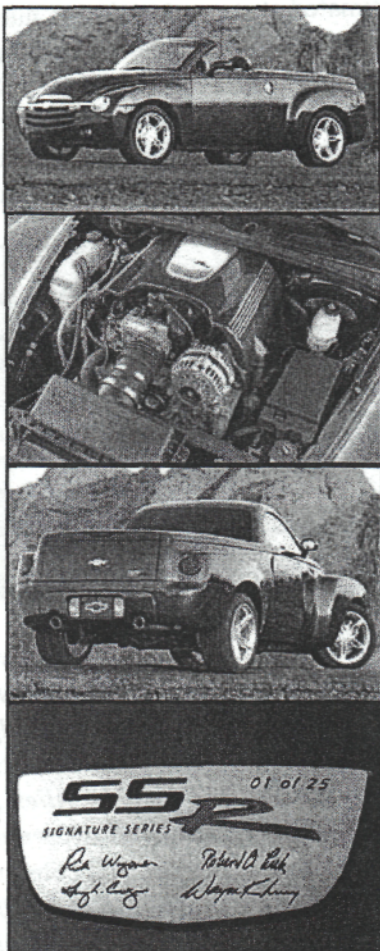
The new Revell '40 Ford, from their website!



## Chevy Thunder!

**Hot Rod pickup!** The *Chevrolet SSR* will not go on sale until at least the *summer of 2003*, but GM will begin by releasing 25 "Signature Series SSRs" throughout 2003, starting with vehicles to be produced this month. Many of those signature vehicles will be involved in a theme-oriented events across the United States through the year. Along the way, Chevy representatives will collect memorabilia, photos and news clippings, and then incorporate the materials in a scrap book to be

auctioned with the vehicles at the end of the trip. The 25 SSRs will represent the first actual production vehicles and will all carry identical specification and appearance and will have exclusive content not available on other 2003 models coming later in the year. Such content includes "Signature Series" badging, silver interior stitching, Ultra Violet colored paint, and body-colored engine cover. Although the vehicles will look the same, they will be outfitted with special themes including a *General Motors-themed SSR*, complete with the signatures of



GM chief Rick Wagoner, Vice Chairman Bob Lutz, and other executives. Other themes include a *Society of Automotive Engineers edition*, a *Chevy Racing edition*, a *Rock & Roll edition*, and *Street Art edition*. The rollout comes after a three-year wait for Chevy's retro-rod, which was first shown in January 2000 at the Detroit show. A major obstacle in bringing the car to market has been its power-retractable hardtop, which is actually a four-piece unit that converts the mini-truck into a roadster with the touch of a button. The truck gets a *small-block 5.3-liter V8* (vs. the

6.0-liter in the concept) and is built on GM's next-gen small truck platform. The limited-production SSR should ring in at around \$40,000 (!).

## Free Stuff!

For those of you scarfing up the early runs of the AMT/ERTL Hogan's Heroes Jeep, and you noticed a missing tire, this should be of interest:

Cheryl and the gang at RCE are gonna take care of you.

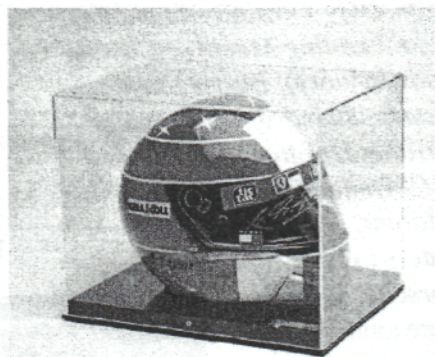
They will be reworking remain-

ing inventory to include the 5th tire. They will provide a 5th tire to consumers who contact them (*one per kit!*).

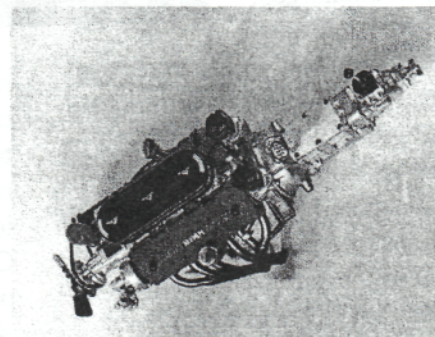
Thanks to Tom Carter of *Hobby Heaven* message board fame (and Matt G.) for this scoop! 🚗

## Big Boys Toys

I visited a neat shop while in New York (*spent over an hour just taking photographs, and 'browsing'!*) for New Year's—the *Exoticar Model Company* (<http://exoticar.com/pages/index.cfm>). They featured "Big Boys toys" ranging from \$9.95 up to and over \$5,000.00!! Check out the photos and the website, and lemme know what you think! 🚗



2000 Schumacher Unworn Production Helmet—Only \$3,995.00 (shipping NOT included!)



Ferrari 250 Engine—Please add \$50 for shipping: Only \$6,500.00 (?!?)



## This 'N That!

**New Stuff!** Currently hitting the streets from Bob Korunow at *The Model Car Garage* are the following sets: *1958 Plymouth Belvedere* (MCG-2233, \$16.99), *1968 Firebird* (MCG-2234, \$13.99), *1956 Chevy Del Ray* (MCG-2235, \$12.99), *1966/67 Corvette (1/12th scale)* (MCG-2236, \$22.99), and *Dealership Badges* (i.e., Harrell, Dana, and Berger) (MCG-2237, \$3.99). Get 'em online at [http://www.modelcargarage.com/mcg\\_main.cfm](http://www.modelcargarage.com/mcg_main.cfm)....More new goodies! This time in kit form. The *Hobby Heaven message board* recently announced some new *AMT Buyer's Choice kits* for *Spring 2003 delivery*, including: *Lotus Indy Turbine* – (January), *Coke Vending Machine Custom Rod* (January), *Barris Surf Woody* (January), *1969 Dodge Coronet Hardtop* (March), and *1969 Dodge Charger 500* (March). **Make plans to get yer orders in now....More powerful**

**Porsche?!** If you were among the unlucky few (?) who never got a chance to buy one of the few turbocharged, **462-hp road-ready racer GT2s** sold in the states last year, Porsche plans to introduce a **road-going version of the GT3** in America next spring. Never previously offered for sale in the States, and not sold in any market since 1400 of the cars were built back in 2000, the GT3 will likely come here with an updated normally as-



pirated 3.6-liter boxer engine producing about **380 horsepower**.

With a curb weight estimated at just 3045 pounds, the car is expected to turn a 4.7-second 0-to-62-mph time, a tenth of a second quicker than the previous model. Look for 18-inch wheels and tires

and a complete aero kit, including a special front air dam, rear wing and side sills. Probably the best news is that a signifi-

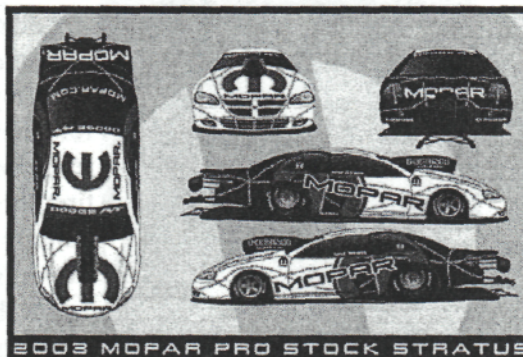
cantly larger supply of GT3s will come to the United States compared with GT2s (only 250), and pricing should be **down (!)** around **\$145,000** (vs. the **\$180,000 sticker on the GT2**). **Such a deal!**

....Despite a federal ruling allowing companies to modify and import to the U.S. so-called **gray market non-U.S.-specification 2001 Ferrari 360 Modenas** and **550 Maranellos**, Ferrari is renewing its challenge with 2002 models. In a memo-

randum filed with the Department of Transportation in October, attorneys for Ferrari North America allege that California importer **G&K Automotive Conversions Inc.**'s

request to import **2002 360 Modenas** should be denied. Ferrari questions a number of proposed modifications as insufficient to permit non-U.S.-market 360s to meet U.S. safety standards. Ferrari also argues that U.S. and non-U.S. cars are not "substantially simi-

lar," a claim DOT rejected in April....**Pro Stock Mopars!** Mopar officials announced their new Pro Stock strategy at



the SEMA show in November. It will consist of two two-car teams, running the **Dodge Stratus R/T** pictured. The first team will consist of **Allen Johnson** and **Darrell Alderman**, while the other team will consist of **Larry Morgan** and **2001 IHRA Pro Stock World Champion Gene Wilson**....**Rally 'round, boys!** Mitsubishi announced recently that they **will not compete in the WRC series for 2003**. They plan to **return** stronger for 2004. No word on the disposition of their main drivers, **Alistair McRae** and **Francois Delecour**....**Hemi Hauler!** This long, low-slung rear-drive wagon is known as the

**Dodge Magnum SRT-8**, and is powered by a **5.7-liter Hemi V8** capable of churning out more than



(Continued on page 7)



(Continued from page 6)

300 hp and 300 lb-ft of torque. It should be produced in 2004 as a 2005 model, along with the Hemi-powered rear-wheel-drive *Chrysler 300N*. It is rumored that all wheel drive will also be made available....***Stop, in the name of the law!*** In the United Kingdom, there's a service that phones you if your car is stolen, tracks it using a global positioning satellite system beacon and turns the engine off when the cops are ready to nab the bad guys! In the U.S., *Delphi Automotive* is pushing a technology that uses GPS to follow trucks and ***turn them off if they stray from their approved path***. Services in Canada and the U.S. ***track and deactivate rental cars if they're stolen***. But talk around the water coolers at Convergence, a recent car electronics show in Detroit, centered on how ***easy it would be to build a device using electromagnetic waves to interfere with and short-circuit the electrical systems in every vehicle within a certain geographic area and keep them from running while the police investigated area crimes***. A more sophisticated version of the same sort of engine-killing device could also be targeted and used to shut down ***cars leading police on chases*** (well, there goes Fox's ***"Wildest Police Chases!"***). Word from the people who specialize in the integration of electronics into automobiles is that this is clearly something they could do ***right away***, so the idea of whether authorities should be able to disable vehicles has already moved from being a practi-

cal question to a political one. ***Big Brother is not only watching***, he'll be ***zapping*** your wheels, if you aren't careful....***Caped Crusader on Unemployment!*** Yup, it's true. *GM* recently gave him his walking papers, meaning he'll no longer be pitching the *OnStar system*. They will be using more real life situations, to show the benefits of the system to real people....Swiss police say they caught a ***Mercedes driver doing 100mph - while he was towing a 20-year-old Skoda***. The 34-year-old, who didn't have a driver's license, stopped to help a young couple whose Skoda had broken down. Police noticed the speeding cars when they saw the Skoda driver ***flashing his lights and beeping his horn*** to try to get the Mercedes driver to slow down. Before they could intervene, the Skoda hit a crash barrier and then bounced into the back of the Mercedes. Police are now considering what charges to bring against the Mercedes driver. No serious injuries were reported....***Bill Hielscher***, who owned *Green Valley Race City* in North Richland Hills until it closed in 1986, died recently after a brief illness. He was 67. Mr. Hielscher was a partner with his daughter and son-in-law at *Texas Raceway* in Kennedale. He also owned *Amarillo Dragway*. He will be remembered for

his flair for promoting races, and his commitment to family, friends, and racing. Mr. Hielscher was born in Indiana and started drag racing there when he was 19 years old, with his first car - a 1953 Oldsmobile. He moved to Texas in the late 1950s and became a full-time professional drag racer at age 30. Earning the nickname ***"Mr. Bardahl"*** for the sponsor on his race cars, Mr. Hielscher competed as a professional for 6 1/2 years. He won ***37 American Hot Rod Association events, nine AHRA championships and six AHRA world championships***. Mr.

Hielscher also set a ***land speed record at the Bonneville Salt Flats*** in Utah. He has leased and promoted drag strips in ***six states***, including four in Texas. At Green Valley, he promoted several special events, including a jump by famed motorcycle stuntman *Evel Knievel* that was broadcast on *ABC's Wide World of Sports*. Thanks for the memories, Bill.... ***Secret agent Fords!*** I recently saw the latest James bond flick, ***"Die***

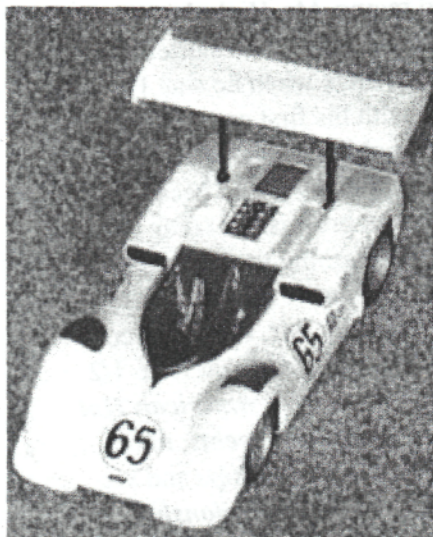
***Another Day"*** (you know the one with the *Aston Martin Vanquish* and the new *T-Bird?*), and was amazed at the story in *Motor Trend* magazine that they were all basically ***Ford-powered!*** They tore out their exotic drivetrains and plopped *NASCAR Ford V-8s*

(Continued on page 12)

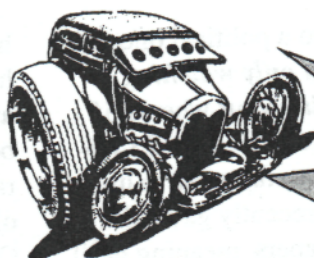




## This 'N That!



A build-up of the Fisher Models Chaparral 2E (as detailed in last month's newsletter)



Win This  
Car!!\*



\* Or one similar to it!!

*Hagerty insurance*, a collector car/boat insurer, has gotten together with *Passport Transport* to sponsor the "Nerd Car Sweepstakes." They are offering a 1978 AMC Pacer (a.k.a., the pregnant rollerskate!) to a lucky (!) winner. It will be awarded in August of 2003. For further info, visit either [www.hagerty.com](http://www.hagerty.com), or [www.passporttransport.com](http://www.passporttransport.com). 🚗

## Tuners Backwards 'R' Us!



Santa, takin' a well-deserved vacation!

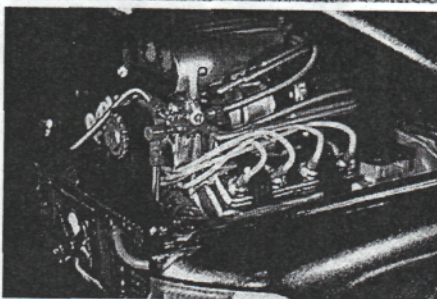
**Bob Johnson** (a former Monogram employee) has resurfaced on the modeling scene. He is with *XS Tuning* ([www.xstuning.com](http://www.xstuning.com)), a company that has designed die-cast replicas for *Revell*, *Team Caliber*, *Carousel 1*, and *1320, Inc.* and has a new focus—tuners! Starting in January, they will be offering 12 sets of 1/24th scale tuner wheels in chrome plated, aluminum, and white finishes, and 40-series tires (17" x 8") featuring two different tread patterns. Drilled brake calipers and rotors will also be included! Later in the year, a range of 18" two-piece wheels (outer rim will be chrome in all cases) will be released. Retail will be only \$8.99 each. Such a bargain—review samples should be available shortly, so watch for 'em! 🚗



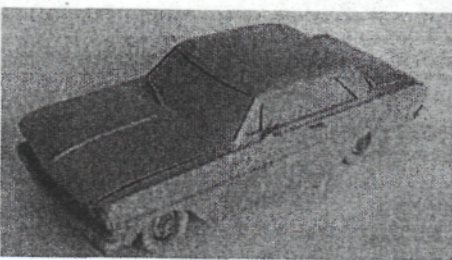
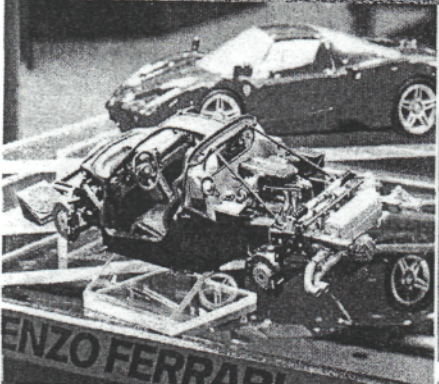


## Pic Page

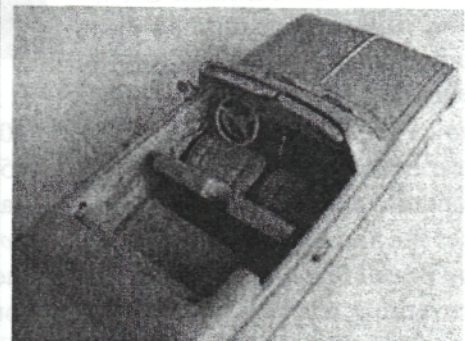
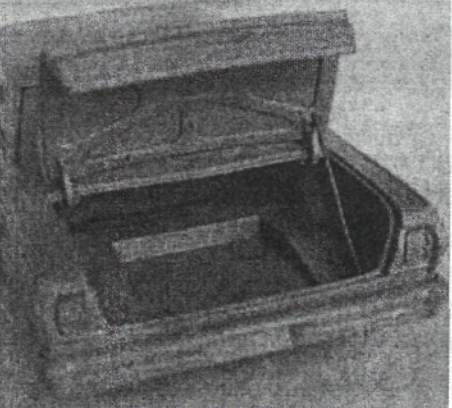
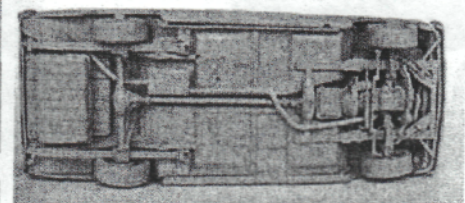
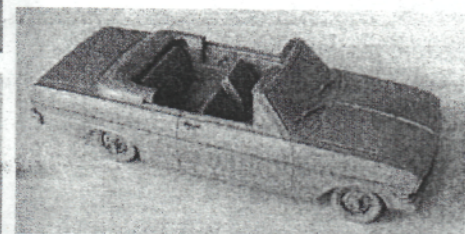
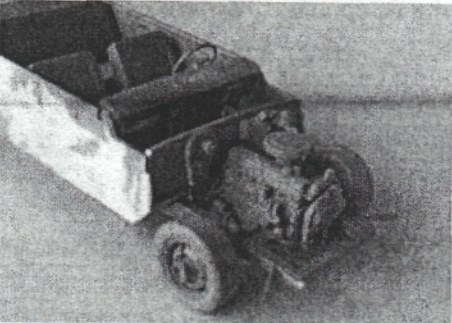
Hemi Ram diecast! Go to <http://www.car-truck.com/chryed/collect/c042701.htm>



Johnny Lightning funny cars, complete with Christmas Tees!



New Muscle Machines Gassers – Plymouths, T-Bolts, and '62 Vettes!!



Trumpeter Nova convertible test shots

Upcoming Tamiya Enzo Ferrari!

Trumpeter Nova hardtop test shots



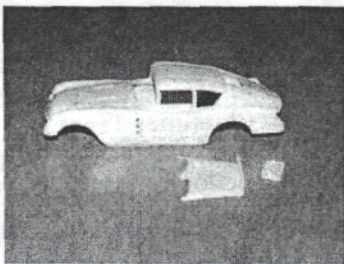
## Model Buffet

This column will continue to appear depending upon the flow of information and new products of interest to MAMA members.

RnD Unique's ([www.rndunique.com/rnd\\_main.cfm](http://www.rndunique.com/rnd_main.cfm))

1954

Cor-  
vette  
Cor-  
vair  
show-  
car  
tran-



skit (it uses the AMT 1:25 scale '53 Corvette, kit no. 31811) should be available as you read this. The transkit, mastered by **Gerry Nilles**, includes the body, interior panels and tailpiece and will sell for **\$30.00**. The tailpiece is not chrome plated, so it's time to pull out the Alclad II and get busy. For info, contact R&D Unique 17113



S.E. 149th  
St. Renton,  
WA 98059  
USA. (206)  
772-2507.

**Perry's  
Resin** is of-  
fering a

'Commemorative Edition Cor-  
vette,' that consists of a one-piece  
body, bumpers (6 pieces), license  
recess & grille (unplated - model  
shown using Alclad Chrome),  
clear head light lenses, covers,  
front turn signals, and tail lights. It  
uses the interior and chassis from  
any Revell SnapTite C5 Corvette  
convertible, and retails for **\$35.00**.  
Go to [www3.sympatico.ca/  
perrysresin/catalog.htm](http://www3.sympatico.ca/perrysresin/catalog.htm).

## Lyle Willits Collectible Cover Series

FOR PERVS WHO PLAY WITH PLASTIC

# STREET ROD

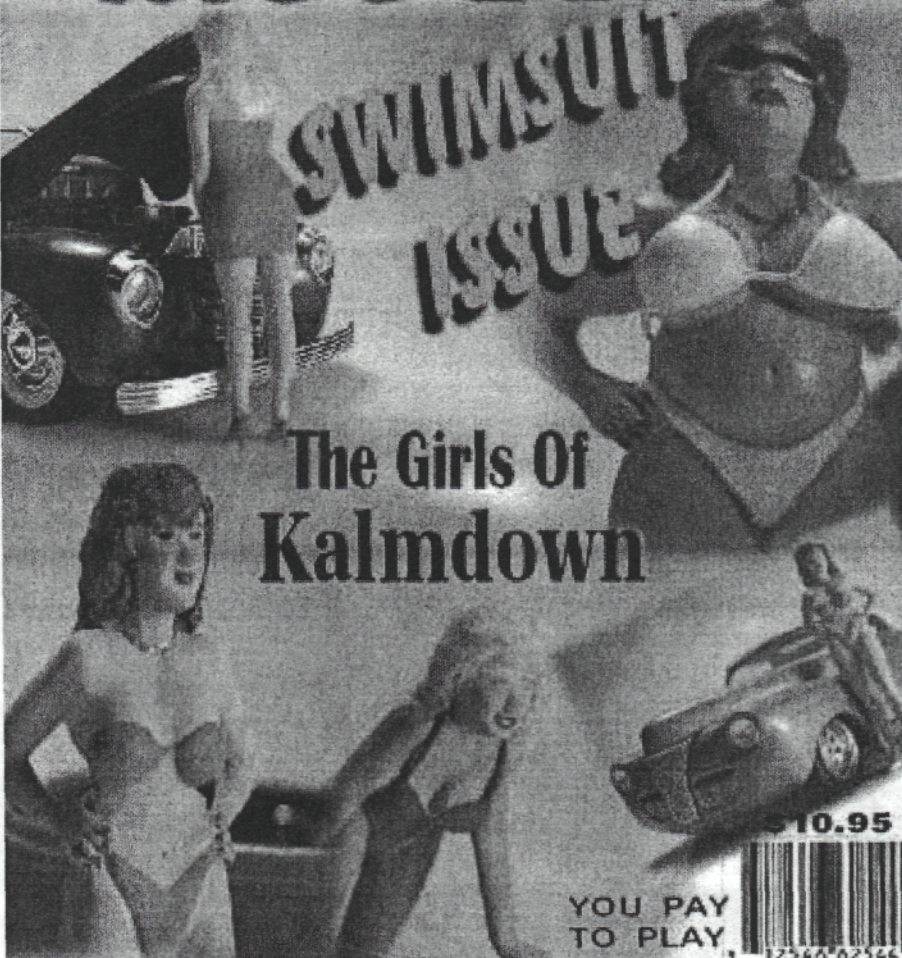
KALMDOWN  
PUBLISHING

February  
2003

# MODELER

## SWIMSUIT ISSUE

## The Girls Of Kalmdown



YOU PAY  
TO PLAY



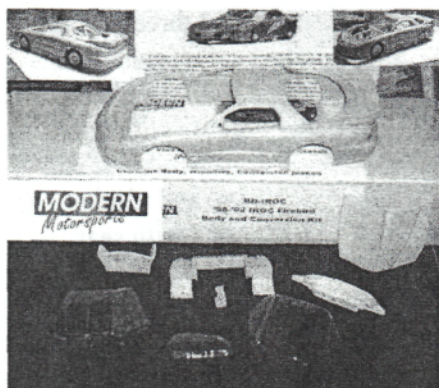
**Larry Krauk** at **Resin Works**,  
4051 W Sierra, Battlefield, MO  
65619 ([www.resinworks.com](http://www.resinworks.com)),  
has introduced a **1960 Ford 300 2  
door sedan resin conversion** for  
the ERTL kit. The body and vacu-  
formed rear glass will sell for  
**\$35.00** plus s/h. In the near future,  
Larry plans on offering a base line

interior if you don't want to tackle  
that yourself. If you really wanted  
a 4 door, you can fill and re-scribe  
the door lines (for the Mayberry  
patrol car you always planned on  
building).

**Modern Motorsports** ([http://  
www.angelfire.com/nj4/mm0/](http://www.angelfire.com/nj4/mm0/))

(Continued on page 11)





(Continued from page 10)

catalog.html) has a 1/24th scale **IROC Firebird racer** available. It uses the Revell Pontiac Profinish type chassis (new Home Depot/Interstate), includes vacuformed windows, conversion pieces, and, sells for \$34.00. A detail pack includes a picture reference CD with close to 100 pictures, SS roof deflectors, quick change rear end, spoiler extensions with wicker bill (vacuformed), IROC style coolant bottle, air cleaner, intake (18" intake), valve covers, roof cam, bumper cam, hood plates, exhaust, side window clip, dash, and Profinish update (CH-PFU w/quick-change rear). It sells for \$45.00. The kit with body is \$70 (save \$9.00!) Thanks to **Dave Toups!**

Thanks again to **Matt G.** Send items of interest to me at [gtoGuy@mindspring.com](mailto:gtoGuy@mindspring.com). 🏆

## Events

- 🏆 Jan. 17<sup>th</sup> to 19<sup>th</sup> – **World of Wheels**, at the D.C. Convention center.
- 🏆 Jan. 25<sup>th</sup> – **Greater Baltimore Antique & Collectible Toy Show**, from 8:30 a.m. to 2 p.m. at Tall Cedars Hall, 2501

Putty Hill Ave., Towson, MD. Admission, \$4.00. Info: [410] 252-1084.

- 🏆 Feb. 28<sup>th</sup>, Mar. 1<sup>st</sup>, & 2<sup>nd</sup> – **Hot Rod & Custom Car Show**, at the Ocean City Convention Center on Coastal Highway. Info: Call [410] 798-6304.

- 🏆 Mar. 8<sup>th</sup> – **Chesapeake Region AACA 30<sup>th</sup> Annual Antique Auto Parts Flea Market**, from 9 a.m. to 3 p.m. at the Howard County fairgrounds, Route 144, West Friendship, MD. Info: Tom Young [410] 653-3108.

- 🏆 April 23<sup>rd</sup> to 27<sup>th</sup> – **Spring Carlisle** at the fairgrounds in Carlisle.

- 🏆 April 26<sup>th</sup> – **3<sup>rd</sup> Annual Eastern Technical High School Car & Truck Show** at 1100 Mace Avenue, in Essex, MD, from 10 a.m. to 3 p.m. Info: Call [410] 887-0190.

- 🏆 May 2<sup>nd</sup> to 4<sup>th</sup> – **Carlisle Custom Compact Nationals** at the fairgrounds in Carlisle.

- 🏆 May 10<sup>th</sup> – **Mid-Atlantic NNL Model Car Show and Swap Meet** at the Ruhl Armory in Towson, MD. Show themes are *Corvettes*, *Motorcycles*, and a special *Shelby award*.

- 🏆 May 15<sup>th</sup> to 18<sup>th</sup> – **Cruisin' Ocean City** on the Boardwalk in Ocean City, MD.

- 🏆 May 16<sup>th</sup> to 18<sup>th</sup> – **Carlisle Import, Kit, Replicar Nationals** at the fairgrounds in Carlisle. Giveaway vehicle is a **1970 Fiat 850 Spyder**.

- 🏆 May 30<sup>th</sup> & June 1<sup>st</sup> – **Carlisle Al-Ford Nationals** at the fairgrounds in Carlisle. Giveaway vehicle is a **1987 Mustang GT**

**convertible.**

- 🏆 June 7<sup>th</sup> – **1st Annual Car Show**, from 8 a.m. to 3 p.m., at Easton Lions Club, Talbot Ag Center grounds, on Hiner's Lane. Info: Jim [410] 822-6843, or Ed [410] 822-7478.

- 🏆 June 13<sup>th</sup> to 15<sup>th</sup> – **Carlisle All-GM Nationals** at the fairgrounds in Carlisle. Giveaway vehicle is a **1965 Buick Skylark 4-door sedan**, with **ONLY 7,876 miles!!**

- 🏆 June 21<sup>st</sup> & 22<sup>nd</sup> – **16<sup>th</sup> Annual Mid-Atlantic Chevelle Show/ACES Northeast Regional**, in Northeast, MD, from 9 a.m. to 5 p.m. Info: Call [301] 464-7618.

- 🏆 June 27<sup>th</sup> to 29<sup>th</sup> – **5<sup>th</sup> Annual Old Dominion Fun Ford Weekend** at VA Motorsports Park, in Dinwiddie, VA.

- 🏆 June 27<sup>th</sup> to 29<sup>th</sup> – **Carlisle All-Truck Nationals** at the fairgrounds in Carlisle.

- 🏆 July 11<sup>th</sup> to 13<sup>th</sup> – **Carlisle All-Chrysler Nationals** at the fairgrounds in Carlisle. Giveaway vehicle is a **1965 Dodge Dart 270 convertible**.

- 🏆 July 25<sup>th</sup> to 27<sup>th</sup> – **Summer Carlisle & Carlisle Summer Bike Fest** at the fairgrounds in Carlisle. Giveaway vehicle is a **2003 Harley Davidson FXST Softtail Standard**.

- 🏆 Aug. 22<sup>nd</sup> to 24<sup>th</sup> – **Corvettes at Carlisle** at the fairgrounds in Carlisle.

- 🏆 Oct 1<sup>st</sup> to 5<sup>th</sup> – **Fall Carlisle** at the fairgrounds in Carlisle.

- 🏆 Oct. 10<sup>th</sup> to 13<sup>th</sup> – **Endless Summer Cruisin' V** on the Boardwalk in Ocean City, MD. 🏆

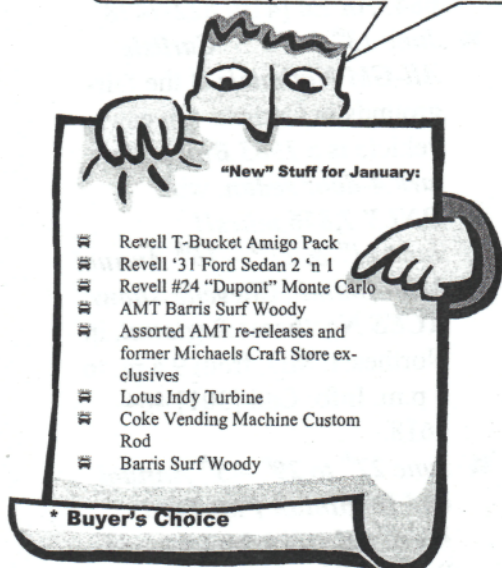


This is the newsletter of the  
Maryland Automotive Modelers  
Association

**Chapter Contact:**

Timothy Sickle  
15905 Ark Court  
Bowie, Maryland 20716  
Phone: 301-249-3830  
Email: gtoguy@mindspring.com

**MAMA's BoyZ do it in scale!**



(Continued from page 7)

in place behind *Explorer* axles for the *four-wheel drive ice chase scenes* (they did have one stock *Vanquish* for the close-up scenes). As for the *1957 Ford*, James needed a "*fast car*" later in the movie! (Thanks to *Autoweek.com* for a lot of this stuff) 🚗

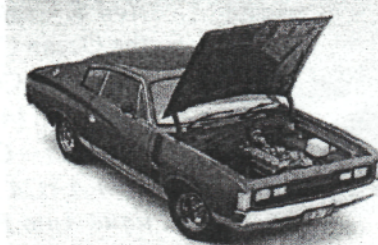
## Classifieds

**WANTED**—Chrome custom wheel cover from new Hogan's Heroes Jeep kit. Need four. Tim Powers, [410] 255-3976, see me at a meeting, or e-mail [tepower@toad.net](mailto:tepower@toad.net).  
**FOR SALE**—(2) 1970/1971 resin Judge decklid spoilers, \$5.00 each. Tim Sickle, [301] 249-3830, see me at a meeting, or e-mail [gtoguy@mindspring.com](mailto:gtoguy@mindspring.com). 🚗

## New Website

Check out this neat Aussie web-site—<http://www.classiccarlectables.com.au/welcome.htm>. *Classic Carlectables* offers several scales of *Australian supercar racers*. Scroll down and click on the *1971 VH E38 Big Tank Charger*, Item No. 18059.

Created with cooperation and support from John Ellis, former Chrysler Special Program manager, it is done in the original Chrysler Magenta color scheme, and features the following: Opening



hood and trunk to display the Hemi with ribbed rocker cover, and three Weber carbs; spare tire/jack; opening doors with wind up windows; sliding and tilting seats with seat belts; operating differential and tailshaft; functional front and rear leaf spring suspension with shocks; dashboard with full instrumentation; carpeted interior floor; a Certificate of Authenticity, and an 8 page booklet on the history and development of the car. The RRP is **\$195.00**, and it's due out this month. 🚗

**We're on the web!**

<http://www.geocities.com/MAMAZboyz/>

## Directions

**From the Baltimore Beltway (695):** Take Exit 7, Route 295 (Baltimore-Washington Parkway) south towards Washington approx. 18 miles to Route 193 (Greenbelt Road), and exit. When on the off-ramp, stay to the right and merge right onto Southway (see below).

**From the Washington Beltway (495/95):** Take Exit 22 north, towards Baltimore. Stay in the right lane and take the first exit onto Route 193 (Greenbelt Road). When on the off-ramp, bear to the right and take Greenbelt road west, towards College Park. Immediately after passing over the Parkway, turn right (at the light) onto Southway (read on!)



**Once on Southway:** Go straight to the second (2nd) STOP sign. Turn left onto Crescent road. Go to the STOP sign and turn right into the parking lot behind the Greenbelt Library. Once in the lot, look to the right. The large white building is the Greenbelt Community Center. Enter using the doors near fenced tot lot. The multi-purpose room is on the second floor. There is an elevator to the left of the entrance. 🚗