



MAMA SEZ!

Volume 17, Issue 5

January, 2004



This is the newsletter of the **Maryland Automotive Modelers Association**

Unmasked!	2, 3
Detroit Concepts	4
'Graffiti' T-Bird	5
This 'n That	6
Wild Horses	8
H2 Limo	8
Model Buffet	9
Collectible Cover	9
PL 1965 Coronet!	10
New Websites	12

A Fresh Start!

Well gang, it's time to take down the decorations and get ready for a new year. Let's see what the new year brings, eh?

There were about **60 people** listed on the sign-in sheet, but more like **90 (or more!)** in the room for all that delicious food! I think the reason is that the room is only rated for 92 people, so anyone over that limit would have had to leave!! Thanks to all who provided something to allow us to have such a feast last month.

Themes for our **2005 NNL show** were discussed. It was felt that if

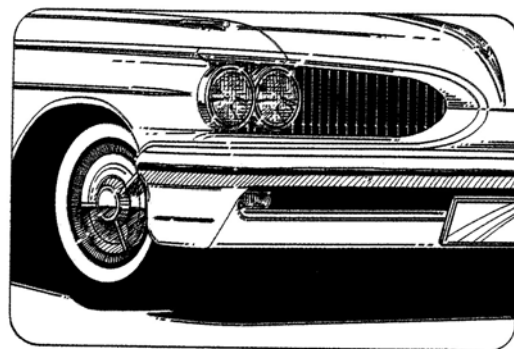
we were to be able to announce the following years' themes at this years' awards ceremony, it would be an obvious benefit.

I found online coverage of the **Detroit auto show**, and included both **near-future production models**, as well as **concept cars** inside. Enjoy.

Lyle is back with yet another **Custom Rod Modeler** fantasy cover.

The raffle yielded **\$170.00 (plus \$242.00 from the box!)**

Thanks for the anonymous donation of **\$100.00!!**). Kudos to the following people this month: **Irvin Arter, Larry Boothe, Brad, Ron Bradley, Mike Brown, Steve Buter, Ron Hamilton, Ron Leedy, Charlie Magers, Pat Maphis, Nick Sickie, Ray Wickline, Endless Road (Dave Payne), and Replicas & Miniatures Company of MD.** 🍷



2003 Meeting Schedule

All club meetings are scheduled for the third Saturday of the month, but will be **confirmed quarterly**, and are subject to change prior to confirmation. Do **NOT** assume meeting dates - confirm them with a club officer!

- 📅 January 17th
- 📅 February 14th
- 📅 March 20th

Confirmation to follow on remaining dates.

Incllement weather phone number: (301) 474-5255. 📞

Grab Life by the Horn(y)?!

In early November, Dodge signed to sponsor the **Lingerie Bowl**, in which **models will play tackle football (what a concept!)** on pay-per-view cable TV during halftime of the Super Bowl on Feb. 1.

Dodge and Horizon Productions Inc., the Bowl's producer, worked hard to tone down the game's racy image.

The players "were chosen based on athletic ability, although they obviously were already

beautiful people."

The players will wear "sports bra-type tops with lace over them and short shorts with lace over them as well." "They will be wearing helmets, shoulder pads

(Continued on page 12)

Unmasked!

Included here are unmasked photos of the new C6 Corvette, 2005 Mustang, an upcoming truck from Lincoln (*again?!),* 2005 Pontiac Solstice, 2005 Chrysler 300, and Crossfire convertible. Looks like this is gonna be an interesting year for car enthusiasts. **Enjoy!** 🍷





Detroit Concepts, Mild to Wild!

For your viewing pleasure, below you will find some concept cars that debuted at the Detroit auto show. *Enjoy!* (Thanks to autoweek.com) 🍷



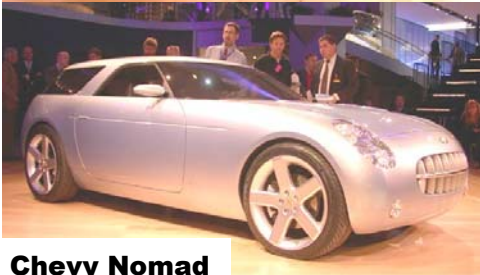
Mitsubishi Eclipse (?!)



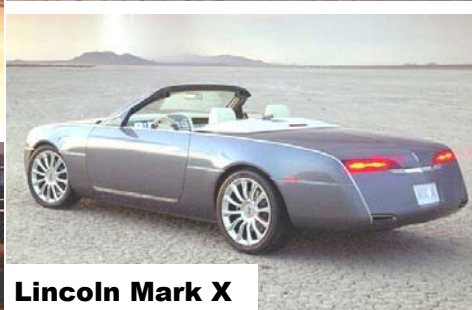
Ford Bronco



Ford Cobra!



Chevy Nomad



Lincoln Mark X



Saturn Curve



VW Concept T



Dodge Sling-



Chrysler 412

American Graffiti 1956 Thunderbird

The kit has over 100 pieces in its various sub-assemblies. The box art model is ugly. It looks as if it has no chrome plating on the bumpers and wheel covers, as they are rather washed out, with no brilliance. The kit looks much better in person, and in my opinion, is a very good rendition of a 1956 T-bird, possibly the best kit on the market, and with some well-placed aftermarket parts, will make a beautiful replica of a 1956 T-Bird.

For the most part, Bill's conclusions about the model kit are right on the money.

I made a few more observations on the kit. Once I mocked mine up, I saw the following items which concerned me as to the overall accuracy of the kit:

Engine: The engine assembly provided is a fair rendition of the 312 cu. in. "Y-Block" V8 engine. Curiously, there is no carburetor included. The air cleaner mounts directly to the intake manifold. There is no cast iron-like texture on engine block or exhaust manifolds.

Underhood compartment: This assembly is attached to the upper interior, and is well detailed, but there is a newer 12-volt battery in the model than the one that fits the battery box on the real car, as well as a dual reservoir brake system master cylinder, when there should be a single master cylinder. There are no hood hinges, just a lift off hood.

Interior: The sides and seat are separated from the floorboard for

easy detailing. The dashboard is well engraved, with a separate handle for the parking brake, but there is a curious vertical seam where the two-piece dashboard comes together, right in the face of the dashboard padding, which will require some filling to be accurate. The steering column and shifter are chrome on the real car! And these parts should have been on the chrome tree, and a separate horn ring should have been included. The brake and accelerator pedals are molded to the floor.

Chassis: I like the fact that the frame is separate from the floorboard, and it begs for superdetailing. However, there is no drum brake backing plate detail or shock absorbers. Replicas and Miniatures Co. of Maryland has a set of backing plates, which will look good here for the superdetail minded.

Wheels and tires: Each tire and wheel combination is made up of 6 pieces, which while simplified, doesn't look too bad, just plain. There are no Ford crest emblems on the wheelcover center, nor is there a recess on the edge of the wheelcover assembly for wheel color contrast paint. The old AMT 1956 Ford Crown Victoria wheelcovers look better. I realize that recently, certain tire manufacturers have been asking for some outrageous royalties for the use of their name, but I am quite sure that there is a tire brand out there that could have been represented, instead of smooth "no-name" tires.

Body Shell: The body is very well proportioned, with a separate hardtop with portholes, a chrome windshield frame, and radio antenna, and a Continental Kit, which was made to be part of the standard equipment on the 1956 T-Bird, due to the fact that the spare tire took up most of the trunk space on the 1955 model. The Continental Kit also has its separation seam in the wrong place, and will need body working to be accurate. I feel that chrome bezels for the parking lights would have been nice, as well as chrome headlight buckets behind the headlamps. Separate outside door handles would have set off the exterior of the car. Even though it was an option, an outside rearview mirror would have been a nice accessory.

I do not like the placement of the sprue tabs on AMT/ERTL's recent model kits, as they are on the faces of the various chrome parts. Some sort of touch up is required to hide the spot on the parts where they were removed from the tree, and that detracts from the overall appearance of the finished model. For some reason, AMT/ERTL chooses not to provide decals for various details, such as instrument gages, underhood decals, and some exterior scripts, like the current model kits from Revell/Monogram and foreign competitors. Just some hokey, inaccurate, undersized license plate decals, and in this kit, it is a poor rendition of a yellow on black

(Continued on page 10)

This 'n That

More accurate Accurate Miniatures news! Do not expect a **Lola T-70** as was rumored. It is not coming, nor is it even on their list! They are currently selling a good number of their aircraft kits, albeit with new decals. The **first car kit** out will be the **Vette GS** with new box art and new decals for a **Penske car**. That will be **followed by a GS roadster**. This is a version of the coupe and will have some nice decals and box art. **(HEY BRAD!!)**. They are **working on a few all new auto kits but there are not on the schedule yet but still 'working'**. The **stock car kits are gone for good**. Apparently, they missed the NASCAR 'wave.' On another front relating to modelers, **Goodyear** has shifted its **protection of its trademark to making it a 'cash cow.'** According to a former licensed Goodyear trademark user, **years ago, a trademark user fee was \$50 a year**. This was all they needed to do to protect their trademark under the law. **Now they are asking for a slice of each kit, a BIG difference!!! There may be a lot more 'noname' tires in the future kits**. Thanks to the **Hobby Heaven message board...** "**Grumpy**" **die-cast**. Look for a **1/24th scale die-cast limited edition** of one of the **most recognizable Camaro drag racers** known to man—the white 1968 Camaro SS of none other than **Bill "Grumpy" Jenkins**. It will retail for only **\$59.95 (plus \$7.40 S+H)**. Check out their website (www.rsc-collectibles.com) for more info... **Celebrity auction**.

By the time you read this, **Mazda North America** and **Britney Spears** will have auctioned off an **RX-8** driven by Britney in her latest video, "Me Against the Music." She autographed the steering wheel and hood. All proceeds of the eBay auction will be donated to the Britney Spears Foundation to help kids in need... **Here come da judge?! Or maybe not**. Word is Pontiac will bring out a **limited edition** of the **GTO**, perhaps introduced as early as the **GTO Association of America meet** in Pontiac, Michigan, July 14-20. It would be a couple of hundred copies, all in **Carousel Red**, the original Judge 'signature' color... **SLP slips? SLP Engineering**, the company that brought us hotted up Firebirds and Camaros, has **cut staff** at its Troy, Michigan, production facility **from 30 to less than 10** due to lack of work. SLP's Ed Hamburger says the company's SLP Performance aftermarket parts business based in New Jersey is unaffected by the cuts, and that the Michigan plant is still offering hi-po packages for **Regal, Impala, Monte Carlo and Grand Prix...Magnaminous D-C?** Another auction you guys missed was for the first **Mercedes McLaren SLR** in the world. Mercedes-Benz donated that historic supercar as an auction item to benefit the Laureus Foundation, an organization that promotes youth sports to tackle social issues throughout the world. A live auction culminates the fund-raising effort, but the Laureus Foundation already has been holding an online auction (laureus.com) for the car. A standing offer of **1.5 million**

euros—at today's exchange rate, about **\$1.8 million dollars**—is where the bidding started for the Dec. 18 live auction at Christie's in New York... **Aston Martin returns to Le Mans!** Aston Martin is teaming with **Prodrive Engineering** to build a race version of the **DB9 supercar** for the Le Mans 24 hour and the American Le Mans Series. The return to front-line motorsports for the first time since a **factory-backed Group C run in 1989** is part of an attempt by the marque to heighten its profile, according to Aston chief exec Ulrich Bez. Prodrive will design and develop a **GTS class DB9** primarily for sale to customers. It is unclear whether there will be a factory-funded assault, though a race debut late in 2004 is likely to come with a Prodrive-run car... **Buick built for two? A Buick racer?** A prototype built by Bertone in Turin? Yup, says **retiring GM design chief Wayne Cherry**. At the 2004 New York auto show, Buick plans on making a huge splash with a **Mercedes CLK convertible-fighting concept** that's **equal parts Lexus SC 430 and CLK**. Hopes are to reposition Buick in the market and make it as hip to own as any Lexus... **Smart Sling Shot?! Dodge used a Smart platform** to create a concept car for the Detroit auto show in January, another indication of the growing cooperation among American, German and Japanese product developers at Daimler-Chrysler. The **Dodge Sling Shot** is a two-seat, bare-bones sports car with a two-piece retractable canvas roof. It is powered by a 90-hp,

(Continued on page 7)

T 'n T (contd)

(Continued from page 6)

three-cylinder engine. The next-gen Smart will be sold here in 2006. The four-door vehicle, developed off the next-gen Mitsu Lancer platform, will be built in Brazil. Smart cars are sold by DaimlerChrysler in Europe. DaimlerChrysler owns a controlling share of Mitsubishi Motors Corp. Dodge has no production plans for the Sling Shot. Another concept planned for the Detroit auto show, the **Jeep Rescue** is a truck the size of an **H2 Hummer** built on a 123-inch wheelbase (*the H2's wheelbase is 122.8 inches*). The four-door Rescue features removable doors and a folding windshield... **Condolences!** Longtime **Hurst Performance Co.** art director **Robert L. "Bob" Held** died Nov. 23 at the age of 83. Hired by George Hurst in the early 1960s, Held produced all of the artwork for Hurst advertising and promotions during his two decades at the company... **Perennial NHRA racer John Lingenfelter**, owner of **Lingenfelter Performance Engineering** for the past 30 years, passed away Dec. 25th at the age of 58. He is survived by his wife, Cynthia, and two daughters, Kerri Ann Page, and Kelly Jo Kline... Condolences also to **MAMA's Boy Larry Boothe**, whose mother

passed away in early January after being hospitalized for an illness. Our hearts and prayers go out to you and your family, Larry... **"I told ya So!!"** The **January, 2004** issue of **Playboy** has an article on the **"50 Products that Changed the World,"** and coincidentally enough, the **Pontiac GTO** is listed. 'Course, the Ford Explorer is there as well... **High-priced spread!** Ford Motor Co. will price the **GT supercar** at **\$139,995**, not including destination charges, when it goes on sale in summer 2004. Freight charges are estimated to be about **\$1,225**, but are not finalized (*gas-guzzler tax not included*). Options will include lightweight wheels, upgraded audio, painted brake calipers and a striping scheme. The automaker has received **700 requests to be on the GT waiting list from celebrities, athletes and corporate executives**. That number does not include consumer deposits made to individual dealers,

a number that Ford did not disclose. Ford expects to sell 3,500 GTs in America over its two-year model cycle... **"The 'Devil' made 'em do it!"** The **2005 C6 Corvette** has barely been officially introduced, and the Corvette development team is already hard at work

on future, high-performance variants, including a **wild 600-plus horsepower Ford GT-fighter** known internally as **"Blue Devil."** Sources now say that it will be a case of **"nothing beats cubic inches"** with 95 extra horses (*compared to today's 405-hp Z06*) coming as a result of boring and stroking the next-gen Chevy small-block V8 to **427 cubic inches—7.0 liters**. Not since the late-1960s has that magic number

of cubes been under a Corvette's composite hood (*though there were some 454s along the way*).

The **price** indicated on the internal documents is **\$100,000** for

Blue Devil, if and when it actually makes production in 2006—at the earliest... **On again, off again!**

Alfa Romeo has again postponed its return to the United States. The Italian automaker will not re-enter the U.S. market in 2007 as planned, according to Fiat Group CEO Giuseppe Morchio. "We have to fix our operations in Europe before we start thinking about North America."... **Hot rod pickem ups! Joe Gibbs Performance Corp.**, of Huntersville, N.C., is working with Decoma International Inc. of Concord, Ontario, to make **1,200 performance versions** of both the **2004 Chevrolet Silverado** and **Tahoe** at Chevrolet dealerships. The package includes a **front fascia with fog lamps, tailgate spoiler, 20-inch wheels, cat-back exhaust, tuned suspen-**

(Continued on page 8)



T 'n T (contd)

(Continued from page 7)

sion, custom seats, gauge cluster, floor shift lever, supercharger, brakes designed by Gibbs and tonneau cover (the last three dealer-installed options). Prices have not been given... **"Any Color you want!"** The **2005 Mustang** will feature an industry-first **color-configurable instrument cluster**, to allow customers to light their gauges in any one of **125 unique colors...Radioactive Fords?!** Ford has developed the **"GloCar" concept car** to improve night-driving safety. It uses **LED lights** to change the body panel color, intensity, and frequency based on safety conditions and user preference. The rear panel doubles as a brake light, and the side panels as blinkers. When somebody comes too close, the panels increase in intensity,

signaling the driver to keep a safe distance. Sounds distracting to me... **Historic Caravan.**

According to Chrysler, the **Museum of American History** is adding a **1986 Dodge Caravan** to its collection. It will be featured in a new exhibit entitled **"America on the Move"...** **Sparks in China.** **GM** began selling its first Chevy-branded passenger car built and sold in China, the **Chevy Spark**, in 14 Chinese cities in early December... **"What was he thinkin'?!"** Recently in Florida, a man who was released from prison returned to the county jail four days later to retrieve his stuff. He had served a sentence for **drunken driving, auto theft, and habitually driving with a suspended or revoked license.** When asked to provide identification, what does this **rocket scientist** do? Hands over his license (!), which a routine computer check showed had been

revoked for life! But wait, it gets better! Since they could not prove he did anything illegal since they did not see him behind the wheel, they asked him to drive to the rear lot. He did so, **parking in a fire lane!!** To top it all off, a computer check of the car's plate found it had been reported **stolen** the same day he was released from prison. **Ya know, some people should be banned from the gene pool..."Pitched, like a Rock!"** Since 1992, Chevy has used the **Bob Seger "Like a Rock"** ads to sell cars and trucks. As of December 31st, 2003, their new campaign will be **"An American Revolution."** Word is that the Silverado will be the only one to keep the "Like a Rock" ads. (Thanks to the *Washington Times*, *autoweek.com*, as well as other Internet sources for this insanity!)



H2 Limo?!

The latest in **'Limo Envy?'** The **H2**. Nine companies in Missouri, Florida, New York, and California build 'em, along with **Escalades** and **Excursions**. But the H2s are by far the most popular.

It takes about seven weeks to complete one. When finished, it is 16 feet long and 7 1/2 feet high. They are equipped with such niceties as: **hardwood floors, flat-screen TVs, video game systems, fibre-optic lighting, mirrored ceiling, and leather seating for 18.** White is the most popular color, and they range from **\$95,000 to \$125,000** per copy. **Cheap at twice the price?**

Wild Horses

All Ferraris sold in the U.S. this year will come with a special logo celebrating the company's 50-year presence in the country.

The logo combines the black prancing horse on a yellow background, with stars and stripes to create the number 50.

Ferrari's global sales were up 13 percent in 2003 to a record **1,350 cars.**



The company has set sales records for 11 consecutive years.

The **612 Scaglietti**, which debuted in Detroit, will go on sale in Europe in February, for 200,000 euros. Shipments to the U.S. will begin in July. Ferrari plans to sell 600 units a year, and hopes sales during the eight-year life cycle of the car will exceed those of its predecessor, the 456 GT, by 15 percent.

Better hurry, if you guys want one!



Model Buffet

This column will continue to appear depending upon the flow of information and new products of interest to MAMA members.

Bob Korunow, proprietor of **Model Car Garage**, advises me that the following photoetch sets will be available by March (*i.e.* *Birmingham and NNL East*): **1963 Impala** (for Revell kit), **1967 GTO** (old MPC kit), including **Tempest grille and scripts**, **1969 Chevelle/Beaumont** (including resin Beaumont grille piece), **1970 Chevelle** (for the Revell WOF kit), **Mini Cooper**, and several **tuner kits** and **mesh grilles** that can be cut to size.

R & D Unique (http://www.rndunique.com/rnd_main.cfm) has announced three new resin transkits. Two of these will make vintage Trans Am modelers very happy. First, transkit no. RDU-2883, is the **'67 Trans Am Mustang coupe** to be used with the AMT '67 Mustang or '68 Shelby kit. For \$50, you get 32 resin and pewter parts. Next up, transkit no. RDU-2890 is the **'67 Trans Am Cougar coupe** to be used with the AMT '69 Cougar kit. This transkit also sells for \$50, and you get 34 resin and pewter parts. No decals are offered for the Trans Am cars. Finally, transkit no. RDU-2813 is the **'68 Mustang California Special**. For \$60 you get the following parts: body; hood; taillight panel; dash; rear seat; interior panels; package shelf; rear valance; scoops; head and taillights; interior dome light; fog lights; decals; and, photoetch scripts. R&D

Lyle Willits Collectible Cover

EXCLUSIVE* Stalking Jungle Pam - Tom Carter's Story From Prison

STREET ROD MODELER

NOVEMBER 2002

Does Jairus Draw Them First
Or Does Willits Build Them First?
Story Inside

HOW TO: Baby Moon Hubcaps
From M & M's

Impruve Yor Speling
On Mesage Bords

**HOLIDAY SPECIAL: Make
Roll Bars From Turkey Bones**

Kalmdown Publishing

4.95 US 68.50 CAN

Unique, 17113 S.E. 149th Street,
Renton, WA 98059. Phone (206)
772-2507.

Thanks again to our own **Matt Guilfoyle** for his diligence in bringing us this column! Remember, if you find something interesting, lemme know, and I'll run it, with proper credit given, natch! 🍷

WANTED—Revell kit # 85-7661,
Blue Max Mustang funny car.
Contact Chuck Connor, (301)
737-0528, or e-mail cconnor@gmpexpress.net.

WANTED—(3) sets of **1957 Chevy flip-nose taillights**, or someone able to cast parts. Call Russ Kirkpatrick, (410) 905-5419.

1965 Polar Lights' Dodge Test Shot!



How about these? They are the first images of the mockup of the **1965 Dodge Coronet** model kit from *Polar Lights* (http://www.playingmantis.com/pl/coming_soon.php), expected to be available in May. Looks like this one'll be worth getting. The hood scoop, may signal a racing version? We could only hope! 🏁

Didja Know?

Quick, all you 1960's drag racers—you've all heard of *M&H Racemaster slicks*, right? Well, what does the 'M&H' in the name stand for? Wouldja believe *Marvin* Rifchin and his dad, *Harry*? Thanks to the October 2003 issue of *Hemmings Muscle Machines* for this little tidbit! 🏁



1956 T-Bird

(Continued from page 5)

California license plate.

As I write this article, the aftermarket will hopefully be coming to the rescue for this kit. I am quite sure there will be an assortment of upgrades for this kit in the near future. *Replicas and Miniatures Co. of Maryland* has a photoetch detail set for the AMT 1957 Thunderbird Kit, which has many

of the scripts, as well as the grill mesh. The set will also work for this kit.

Motorbooks International publishes several books, which will be invaluable in the researching this car, as well as the other usual sources on the Internet. One book comes to mind, "*Thunder! bird 1955-66*" by *Alan Tast*, features a chapter devoted to each of those years of the Thunderbird, with several photos of the cars, as well as a color combination listing for

each of the years covered in the book.

The kit has a few shortcomings, which are minor in my opinion. A beautiful model can be the result using this kit as a basis, even with moderate modeling skills. This model kit seems like it will go together easily, as I liked the way it looked when I mocked it up.

If you like the '*other sports car*,' the early Thunderbird, this kit is a must have.

By: Ron Hamilton 🏁



☞ **Jan. 24th—Greater Baltimore Antique & Collectible Winter Toy Show**, from 8:30 a.m. to 2 p.m. at Tall Cedars Hall, 2501 Putty Ave, in Towson. Info: (410) 252-1084, dhart-promo@aol.com.

☞ **Feb. 1st—Super Sunday Collectors Toy Show**, at the Shrewsbury Fire Hall, in Shrewsbury, PA, from 9 a.m. to 1:30 p.m. Info: Carl Daehnke (717) 764-5411, or Joe Golabiewski (410) 592-5854.

☞ **Mar. 6th—Birmingham Classic 2004**, sponsored by The Magic City Car Modelers and IPMS Birmingham, from 8 a.m. to 5 p.m. at Clay-Chalkville High School. This year's theme is **TV Tuners**—and if tuners aren't your thing, just build your favorite movie or TV show car! **Show info:** Tim Kolkewicz, 1028 J Eagle View Dr. Birmingham, AL 35212, TimKustom@aol.com. **Vendor info:** Dan Morgan, Magic City Car modelers, P.O. Box 988 Cullman, AL 35056.

☞ **March 21st—MD Model Car, Diecast & Kit Collector's Meet**, from 9 a.m. to 12:30 p.m. at the MD City Fire department, on Route 198. Info: oltoyland@aol.com, www.oldtoylandshows.com.

☞ **March 27th—18th Annual NNL East**, sponsored by the Tri-State Model Car Club, at the Parsippany P.A.L. building, on Baldwin Road, in Parsippany, NJ., from 9 a.m. to

5 p.m. Themes are **"The Big Four-Oh!"** (marques that celebrate their 40th Anniversary), and **"Gone But Not Forgotten"** (model companies no longer with us). Info: Ken Walkley, TSSMCCJW@aol.com, or Tom Geiger Modl-Citizen@aol.com.

☞ **April 4th—Capitol Miniature Auto Collectors Club Spring Meet**, from 9 a.m. to 1 p.m. at the Dunn Loring VFD on Gallows Road. Info: (703) 941-0373, jwbrostrom@yahoo.com.

☞ **April 24th—4th Annual Car & Truck Show**, from 10 a.m. to

3 p.m. at Eastern Technical High School, in Essex, MD. Info: (410) 887-0190 (Rain date: Saturday, May 8th).

☞ **May 8th—Mid-Atlantic NNL Model Car Show and Swap Meet**, sponsored by the MD Automotive modelers Association, Central PA Model Car Club, and Midnight Modelers, at the Ruhl Armory, in Towson, MD, from 9 a.m. to 3 p.m. Themes this year are **50s Style Hot Rods**, and **Resin Kits**. Show info: Lyle Willits, MAMAperez@aol.com; vendor info: Norman Veber, (410) 768-3648. ☞

Mark Your Calendar Now!

The TRI-STATE SCALE MODEL CAR CLUB presents

THE 18th ANNUAL **NNL**™ **East**

- MODEL CAR SHOW
- SWAP MEET
- AFTERMARKET VENDORS

Next Year's Theme: **The Big Four Oh!**

MUSTANG **CHEVELLE**

Sub-theme: **Gone But Not Forgotten**

Model companies that are no longer with us

➤ **SATURDAY, MARCH 27th, 2004 - 9:00 AM to 5:00 PM** ➤

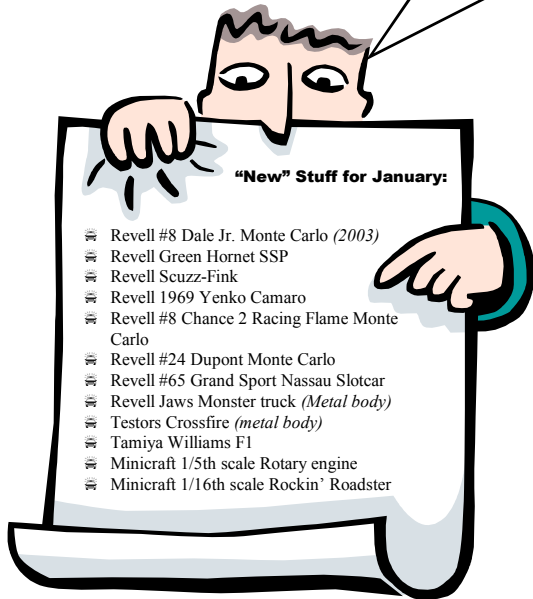
PARSIPPANY P.A.L. BUILDING
BALDWIN ROAD - PARSIPPANY, N.J.

For Show Information: Ken Walkley (201) 556-0270 • Email-TSSMCC KJW@aol.com
Tom Geiger (732) 264-9305 • Email-ModlCitizn@aol.com

Chapter Contact:

Timothy Sickle
15905 Ark Court
Bowie, Maryland 20716
Phone: 301-249-3830
Email: gtoguy@mindspring.com

MAMA's BoyZ do it in scale!



Revell #8 Dale Jr. Monte Carlo (2003)
Revell Green Hornet SSP
Revell Scuzz-Fink
Revell 1969 Yenko Camaro
Revell #8 Chance 2 Racing Flame Monte Carlo
Revell #24 Dupont Monte Carlo
Revell #65 Grand Sport Nassau Slotcar
Revell Jaws Monster truck (Metal body)
Testors Crossfire (metal body)
Tamiya Williams F1
Minicraft 1/5th scale Rotary engine
Minicraft 1/16th scale Rockin' Roadster

Life (contd)

(Continued from page 1)
and kneepads.”

In announcing the Lingerie Bowl in June, the two teams (*Team Dream* and *Team Euphoria*) were identified by pink or blue lace-trimmed lingerie, and the players’ statements suggest the models anticipated wearing garments that are easily torn. Ex-football greats **Lawrence Taylor** and **Eric Dickerson** will coach.

Because the sponsorship came under fire as sexually suggestive and in poor taste, Dodge dropped its sponsorship, calling the association with the controversial event “a distraction.”

Proceeds will benefit the American Foundation for AIDS Research. 🍷

Websites

The *1/87th Vehicle Club* (<http://www.1-87vehicles.org>) was established to promote the construction, use, and manufacture of prototypically accurate vehicle and equipment models in 1/87th scale. The club assists in the exhibition, promotion, manufacturing, and production research of vehicles of all kinds in this scale. They have something on the order of **160 (!) different photo galleries** onsite for your viewing pleasure!

Resilient Resins (<http://www.hrmodeler.com/sota/>) is an outfit offering a variety of **resin bodies** of **sports** and **race cars**. Some available bodies include but aren’t limited to: Lotus 40, Lola T70 Spyder, McLaren M8A &

B, Ferrari 206SP Dino, Chaparral 2, Hussein MKI, Ferrari 330P Can Am, Ferrari 250 Testa Rossa, Cheetah roadster, Mercedes 300SLR, Austin Healey, Costin Lister, Chaparral I, Maserati 450S, Ford GT40 Spyder, McLaren Elva, and a Lister Jag.

Endless Hobbies (<http://www.endleshobbies.com/models.htm>) is an on line hobby store with a wide selection of car, truck and motorcycle models. Check out their **Fujimi** listings! For those not afraid there are also aircraft, armor, figures, and space models. Prices are very competitive.

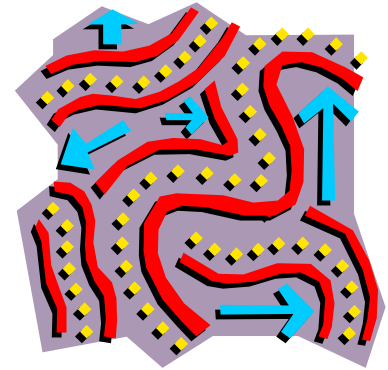
Thanks to **MAMA’s Boy Chuck Connor** for the preceding info. Now, go check ‘em out! 🍷

We’re on the web!
<http://www.toadmail.com/~mama/>

Directions

From the Baltimore Beltway (RT 695): Take Exit 7, Route 295 (Baltimore-Washington Parkway) south towards Washington approx. 18 miles to Route 193 (Greenbelt Road), and exit. When on the off-ramp, stay to the right and merge right onto Southway (see below).

From the Washington Beltway (RT 495/95): Take Exit 22 north, towards Baltimore. Stay in the right lane and take the first exit onto Route 193 (Greenbelt Road). When on the off-ramp, bear to the right and take Greenbelt road west towards College Park. Stay in the right lane and immediately after passing over the Parkway, make a right (*at the light*) onto Southway (read on!)



Once on Southway: Go straight to the second (2nd) STOP sign. Make a left onto Crescent road. Go to the STOP sign and make a right into the parking lot behind the Greenbelt Library. Once in parking lot, look to the right. The large, white building is the Greenbelt Community Center. Enter building using the doors near fenced tot lot. The multi-purpose room is on the second floor. There is an elevator to the left of the entrance. 🍷