



## MARYLAND AUTOMOTIVE MODELERS ASSOCIATION

Volume 7, No. 4 Dec. 1994  
by: Timothy Sickle

About 55 people were in attendance at last month's meeting, which had as its highlight nothing in particular (Unless you consider the fashionable late arrival of that "Dynamic Duo" of Leonard and Kelvin as entertaining!). Those in attendance participated in our annual "Toys for Tots" toy drive and we must all thank Norm and Mary Veber. Why? 'Cause as in years past, they have delivered this load to the Marines for processing. Thanks, Norm & Mary! Hope you got any help you needed! We also discussed our usual "Stuff yer face" Christmas extravaganza held at the December meeting. It should be mentioned here that we should all take a moment to be thankful for everything that we have-our individual health, our families, our numerous friendships made possible by our group, any and all notoriety that our (in)famous members have achieved, and last but not least, membership in one of (if not ~~the~~) best modeling club in the country! I would also like to thank everyone in the club (and several others not in the club!) for all your help on the newsletter. It is your newsletter, and I couldn't do it without you, so thanks!

The raffle raised \$96.00 (plus \$13.00 from the box, plus various other monies-see Treasurer's report on sheet 2 for specifics). The club would like to thank the raffle donors as shown below: Lyle Willits, Bill Clarke, Brad, Jim McGuiness, Dave Toups, Chris Whalley, Rick Wilson, Joe Atwell, Bradley's Car Collectibles, and Replicas & Miniatures Company of MD. Special thanks also go out to those as shown below:

Bob Korunow,  
Model Car Garage  
537 S. Sequoia Dr., No. 309  
West Palm Beach, FL 33409

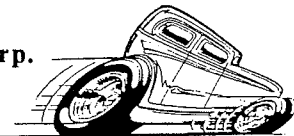
Charlie Saglinbene,  
Pro Tech Model Parts  
1351 Amberg Ave. S.W.  
Palm Bay, FL 32907

Tim Powers,  
Scale Resin Detailers  
808 224th Street  
Pasadena, MD 21122-1348



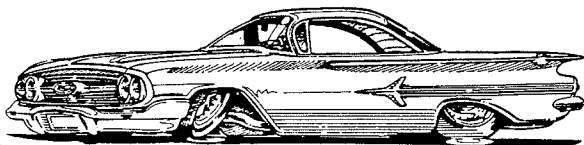
Bob Eager,  
The ERTL Company  
P.O. Box 500  
Dyersville, IA 52040-0400

Mike Perkins,  
RPM Craft House Corp.  
50 E. Dresder. Street  
Kalkaska, MI 49646

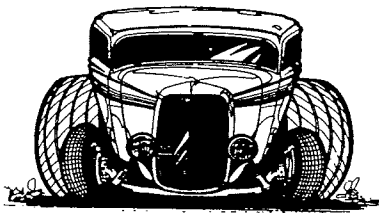


Ed Sexton/Bill Lastovich  
Monogram/Revell  
301 North Third Avenue  
Des Plaines, IL 61101

It also bears mentioning at this time that Dirk Johnson (a.k.a. Detail Master, P.O. Box 1465 Sterling, VA 22170) will be (and has been!) a very active supporter of not only our club, but many other clubs across the country as well. It's up to us to actively patronize Detail Master in appreciation of his continued support [Ed. Note: With the detail items he currently has available (or on the way!), I don't believe this will be a problem!]



MERRY CHRISTMAS!!  
I HEAR "MAMA'S BOYZ"  
HAVE BEEN REALLY  
GOOD THIS YEAR!  
SEE YOU ALL SOON!



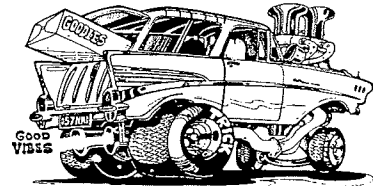
Maryland Automotive Modelers Association  
Treasurer's Report  
Nov.1994



INCOME

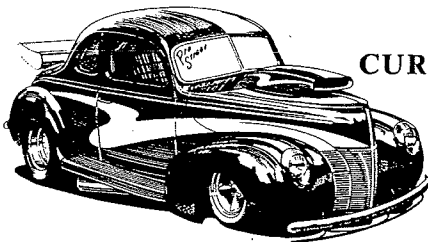
EXPENSES

Balance on hand, 11/19/94	\$	3,161.98
Deposit: Nov. '94 raffle		96.00
and door receipts		13.00
Model kit sales (2)		38.00
Magazine sales (10)		30.00
Food donation		20.00
Postage Nov '94		20.00
<b>TOTALS</b>		<b>3,358.98</b>
		<u>20.00</u>



20.00  
20.00

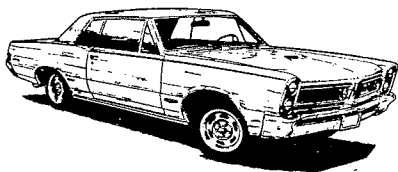
**CURRENT BALANCE** 3,338.98



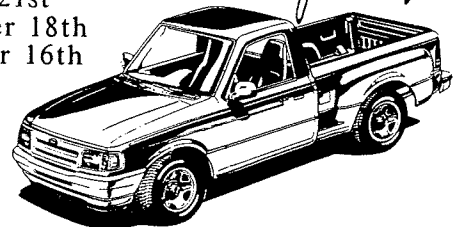
\*\*\*\*\* P L E A S E N O T E ! ! \* \* \* \* \*

The meeting schedule for 1995 has been finalized (almost!) by our own Matt Guilfoyle. All meetings will be from Noon to 5 P.M. and astute MAMA's BoyZ will notice a few changes and one or two gaps in the schedule. Unless otherwise noted, all meetings will take place in room K100. On two occasions, we will be in building Q, rooms 305 & 307 and in August, we will hopefully be scheduling rooms Q305 & 307 as well, but cannot do so before January 1st, 1995. Will advise upon confirmation of same. Got it?! Good, 'cause there will be a test on it!

- |                                |                |
|--------------------------------|----------------|
| January 21st (Room Q305 & 307) | July 15th      |
| February 18th                  | August (TBD)   |
| March 18th                     | September 16th |
| April 22nd (Room Q305 & 307)   | October 21st   |
| May 20th                       | November 18th  |
| June 17th                      | December 16th  |



*SLASH*



Sneakin' a Peek!

This column will appear as frequently (or infrequently!) as new releases from the manufacturers. The idea behind it is to give a "thumbnail review" of the releases as they hit the shelves with a detailed review to follow at a later date (hopefully!). We'll see how it goes! (Ed. Note: The kits are listed in no particular order)

\* '53 Ford Pick-up (AMT #6487): Molded in Lt. Gray....stock, custom & service versions....stock flathead, optional Firedome Hemi...stock & custom grilles (2)....baby moons w/trim rings on chrome tree...."F-

100" vanity '53 CA plate(!)...(8) tires-(4) Goodyear L60-15 & (4) Firestone Supremes...instructions are reproduction of original 1963 AMT 3-in-1 series sheet...open steel wheels..."padded" tonneau cover...tools,jack,fire extinguisher,and welding tanks included.

\* **Guldstrand Grand Sport 90** (AMT #6461): Molded in Lt. Gray...big 'n bigger GS-C's that mount seemingly correct 5-spoke wheels.... platform-style interior w/separate door panels...glass frosted on rear for black paint (potential fit problem with rear glass on sample sent)...separate underhood bracing...all body vents molded closed...simplified disc brakes included...engraving appears to be nice & crisp throughout...minimal decals include "GSA" logos, vanity "GS 90" CA plate.

\* **Ford Aeromax** (Monogram #1216, 1/32nd scale snap):Molded in Burgundy Met...chrome wheels, grille, mirrors & stacks...peel 'n stick markings...plastic, open-backed tires...instructions list parts by name (in most cases) & color.

\* **Chevy ZR2 Pick-up** (Monogram #1096, 1/32nd scale snap): Molded in Red...nicely engraved chassis w/exhaust system, fuel tank, & skid plate molded in...2-piece Goodyear Wrangler tires...pick-up bed & interior molded as one unit...peel 'n stick markings.

\* **Mustang Mach III** (Revell #7364): Molded in Red...Goodyear ZR35's & ZR-40's...tub-style interior w/separate door panels which also includes underhood areas...uniquely shaped windshield installs from outside...separate hood to show off supercharged V8 (w/plastic molded ignition wiring)...nice step-by-step instructions name parts, list paint colors.

\* **"Super Clean" Olds Cutlass** (Revell #7362): Molded in Violet...tiny Goodyear slicks, w/extra set of Firestone Pro Street rear meats along w/necessary Moroso fronts...large, colorful decal sheet...glass frosted on rear...bright chrome (needs to be dullcoated).

\* **"Dirt Devil" Pontiac** (Monogram #2973): Molded in Black...new, more correct nose...colorful "Dirt Devil" markings, w/yellow Goodyear tire markings...re-hash of old chassis (twin shock front end, 180° headers!)...chrome properly dull.

\* **"Kellogg's" Lumina** (Monogram #2974): Molded in Yellow...re-hash of excellent "Goodwrench" Lumina...new 1994 nose clip...again, colorful decal sheet w/yellow Goodyear tire markings...dullcoated chrome, "Chevrolet" valve covers.

\* **"Exide" T-Bird** (Monogram #2450): Molded in Black...Hoosier tires!...chrome too bright-needs to be dullcoated...colorful "Exide" decal sheet (with builder attempting to match and paint nose and tail sections of car)...Hoosier tire markings.

\* **"Quality Care" T-Bird** (Monogram #2451): Molded in Med. Blue... again, chrome needs to be dullcoated...large "Quality Care" decal sheet w/yellow Goodyear tire markings.

\* **1995 Viper RT/10** (AMT #6550): Molded in Lt. Gray...re-hash of 1994 Viper (not a bad thing!)...incorrect smoked headlight covers (again).. ...same excellent Michelins in two different sizes..."Viper" window band in red & white...satin finish wheels (& mirror faces)...light mold lines evident on body.

\* **1995 Z28 Camaro** (AMT #8925): Molded in Lt. Gray...re-hash of 1994 Z28 (not a bad thing!)...bright, even chrome tree..."Chevrolet" window band in red & white, "GR8 Z28" CA plate, "Camaro parking only" decal (still no molded sign to go with it).

\* **1995 Z28 Camaro Conv.** (AMT #8926): Molded in Lt. Gray...re-hash of 1994 Z28 convt. (not a bad thing!)..."Chevrolet" window band in red & white, "Camaro parking only" decal (still no molded sign to go with it).

\* **1995 Chevy S-10 LS/SS** (AMT #6187): Molded in Lt. Gray...re-hash of 1994 S-10 LS/SS (not a bad thing!)...Firestone tires...LS/SS logos, "SS" Mass vanity plate decal...LS/SS-style wheels...buildable either as LS or SS...LS moldings need to be removed for SS.

\* 1950 Chevy 3100 Pick-up (AMT #6437): Molded in Lt. Gray....dogdish "Chevrolet" wheel covers, optional trim rings, steel wheels which mount Firestone skinnies....1-piece 'veed' windshield, separate clear headlights....18-piece straight six cylinder....15-piece chassis (including 4 shocks, drag link, & emergency brake rod)....2-piece exhaust system....upper & lower radiator hoses....separate, drop-in door panels, parking brake, clutch, brake, gas, and starter pedals (!)...7-piece bed....optional visor....front & side hood emblems separate & chromed....instructions list colors & codes from Chevrolet between 1939 & 1946....(3) sets of antique plates, (2) engine decals.

\* **Collector's Showcase w/cobblestone surface** (Revell #3808): Lt. Gray cobblestone-textured base w/multiple holes for adjustability, along with a length of wire to fasten model (not included!) securely.

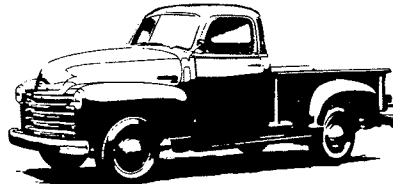
\* **Collector's Showcase w/concrete surface** (Revell #3806): Lt. Gray concrete-textured base (including a man, er personhole cover!) w/multiple holes for adjustability, along with a length of wire to fasten model (again, not included!) securely.

\* 1970 Chevelle SS454 (AMT #8940): Molded in Lt. Gray....re-hash of 1969 Chevelle SS396....rear valance incorrectly molded to chrome rear bumper....correct ram air air cleaner...."Cowl Induction" engraved onto hood bulge....both black and white stripes included along with air cleaner emblem....5-spoke SS wheels included....separate clear headlights, separate clear red tail lights....lightly engraved front fender and trunk emblems.

It should also be note here that the Viper GTS Coupe, "GM Performance Parts" Cutlass, and the 25th Anniversary Trans Am were also received but these kits were already covered in a prior "Peek" column. Cowabunga!

### 1950 Chevrolet 3100 Pickup

(AMT #6437)



The newest release from AMT/ERTL is easily their most detailed kit yet. Since I own a 1952 Chevrolet 3/4 ton pickup as well as having access to a friend's restored 1950 3100 pickup, I'm obviously quite pleased with the subject matter. I can honestly say that I have not been disappointed.

Engine: This assembly consists of 20 pieces in an accurate depiction of the venerable 235 cu. in. "stovebolt" six. Features include separate intake and exhaust manifolds, along with an oil bath air cleaner and optional canister type oil filter. Another nice touch are the "Thriftmaster" decals.

Wheels & Tires: Stock 15 inch steel rims reflect an accurate six lug design and feature molded valve stems. Excellent dog dish hubcaps with logos as well as optional trim rings are included. These wheels mount into four standard Firestone tires.

Chassis: The separate chassis is quite detailed, with 18 individual parts, including the 2-piece exhaust. The only omission which I can see is the lack of the master brake cylinder. This should be mounted under the cab floor on the frame. All in all, this assembly offers the super detailer an excellent starting point.

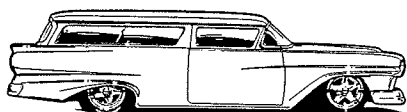
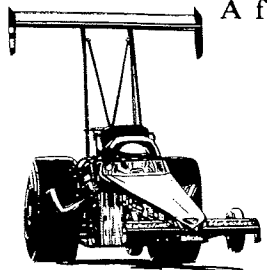
Body: The body is an accurate depiction of the 1950 3100. It has the correct configuration of cowl and side vents and no vent windows. The chrome emblems are separate pieces, a nice touch. The chrome grille is molded open. For a base truck, it will be necessary to strip and paint this part. The casting is excellent with no flash (No surprise, as this is a brand new mold). My only issues with the body are the molded in door handles, which would have been much better as separate chrome pieces, the rather thick drip rails. But, these are very minor criticisms. A pleasant surprise is the optional visor included-very nice.

Interior: In my humble opinion, the best part of this kit, starting from the bottom up, each pedal, including the starter button, are individual pieces. The separate door panels feature more detail than any other contemporary kit. This is quite something, considering the simplicity of the real door. The dash is as fine as I have seen. It does not include a radio, but the majority of trucks sold didn't either!

A few painting tips for the replica stock builder:

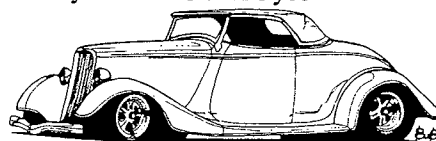
- \* Do not highlight the Chevrolet logo on the tailgate, as this was one solid color
- \* The bed floor should be painted flat black, as the factory boards were hard yellow pine, not oak as seen on some restorations
- \* The instructions tell you to paint the dash and interior surfaces gloss black. Actually, these areas were an interesting flat copper-ish color. I found a 1981-1982 GM Medium Sandstone (GM code 68, 68E, or 68L) to be very close.

I must say that this is probably the best kit yet from AMT/ERTL and most definitely in the same class as the Monogram '59 Cadillac and AMT's own '62 Chevy Bubbletop Bel Air. It's great to see AMT/ERTL providing world class kits for the demanding modeler.



Pontiac Firebird Firehawk

by: Matt Guilfoyle



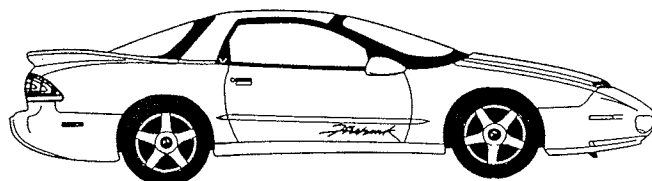
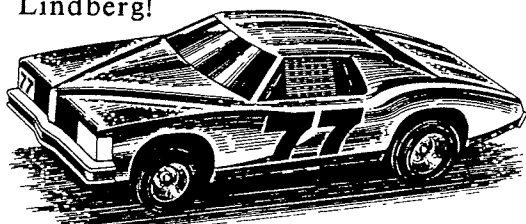
(Lindberg #72578; 1/20th scale; approx. 100 pieces; molded in red, chrome, clear, clear red, vinyl tires)

The awesome Firehawk factory street racer Firebird from the gang at Pontiac (with a little help from SLP Engineering) is the Pontiac that acts like a Corvette! For the paltry sum of \$24,134.00 (base Firehawk price) you too can have this 'Bird with the heart of a Corvette, a 350 cube small block which has been tweaked to 315 hp. with the addition of fresh air induction and stainless steel exhaust system. Add to this 275/40ZR17 Firestone Firehawk SZ radials on five-spoke ROH aluminum wheels and four flashy 'Firehawk' decals, and you might as well just lock me up right now, 'cause what I'm thinking could get me in trouble!

Lindberg has updated their nice Firebird Formula kit to give us Pontiac fans a Firehawk, and here it is.

Basically, there is very little to differentiate a Firehawk from a 'run of the mill' Formula aside from the aforementioned 'Firehawk' decals. Oh, did I forget to mention the unique twin-snorkel fiberglass hood which feeds the low-restriction intake? The differences which Lindberg added to the already excellent Formula kit are the unique twin-snorkel hood and open-element air cleaner for the free-breathing small block, the five-spoke ROH aluminum wheels which mount onto the correct Firestone Firehawk tires, and the additional decal sheet containing the 'Firehawk' decals, and the 'Firehawk' wheel center decals.

The remainder of the kit remains unchanged which is not necessarily a bad thing. The only negative I can see is the lack of frosted area on the glass for the black painted areas and the fit of the rear bumper. Other than that, being a Pontiac fan (who, me?!) I commend Lindberg on their subject matter. I just wish I could afford the real thing! Thanks, Lindberg!



**Pick-Up Comparo-Chevrolet S10 LS/SS vs. GMC Sonoma SLS**  
(S10 LS/SS-AMT #8964; GMC Sonoma SLS-AMT #8128)

Even though I have been building model cars for over 30 years, this is my first comparison/critique of a model kit. These two kits represent two vehicles which are very close to me professionally (Chevrolet sales for twelve years, GMC sales for two years).

Both kits, like the real vehicles, share a majority of their parts, so my likes and dislikes will apply equally to each vehicle. First and foremost, without question, AMT/ERTL has captured these GM twins in all their glory, but there are a few flaws, which I will address later.

Engine: An accurate depiction of the optional 4.3 liter Central-Port Injected V6 in factory stock form. The 22-piece engine assembly is finely engraved, from the Vortec emblem on top of the plenum cover, to the Vortec emblems on the valve covers. Engine accessories include the power steering pump, A/C compressor, evaporator and lines, alternator and serpentine belt assembly, which comes to life when detail painted (Note: Use flat black and metalizer paints and get copies of the dealer brochures for accurate photos if you are building a replica stock version of this truck). The engine builds up in upper and lower halves, eliminating the unsightly seam running the length of the engine and 4L60-E transmission. The rest of the engine builds up in the normal manner. Curiously, with all this detail, where are the upper and lower radiator hoses?

Chassis: The 13-piece chassis assembly is likewise well-done, with a separate frame assembly, which is unusual for a late-model truck. The front suspension is nicely engraved, but is both non-posable, and has only the factory stock suspension height. The rear axle and spring assembly is likewise nicely engraved. With the proliferation of slammed sport trucks, why isn't there either a lowered suspension option or the ability to lower the vehicle without cutting up the suspension components?

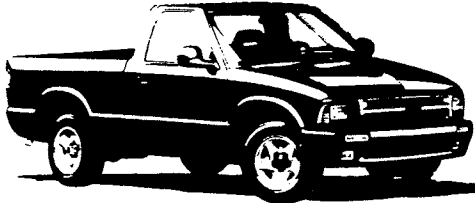
Wheels: Wheels on both versions consist of the factory stock aluminum wheel option, mounted on AMT's new generic Firestone radial tires. On the S10, you get the attractive 5-spoke wheel with instructions to paint the center cap black for the LS version or leave it chromed for the SS version, however, neither truck has chromed wheels, as they should be painted German Silver. Curiously, the same wheel is the custom wheel for the GMC Sonoma, complete with the engraved Chevrolet emblem. The optional S10 wheel is the 4WD alloy wheel (no 4WD apparatus or tires, maybe a ZR2 version is coming?). The 6-hole Sonoma alloy wheel with the same Firestone tires are included with the GMC. Disc brakes are included for the front wheels, while no brake detail is evident on the rear wheels.

Interior: The 12-piece bucket seat interior assembly goes together from the floorboard which is properly engraved with floor texture underneath and carpet texture on top. The dashboard is very well engraved with the option of either painting the engraved instrument cluster or using the kit-supplied decal, under a glass cover. The steering column includes a tilt wheel stalk, turn signal stalk, & a gearshift selector topped off by an accurate steering wheel. The accelerator and brake pedals are attached to the dashboard.

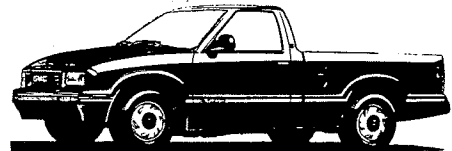
Body: The bed and cab assemblies are correct in proportion and detail for the most part. In my opinion, AMT should have left the body side moldings off of the truck, as an accurate S10 LS or SS could have been built, as well as an accurate Sonoma SLS. The bed attaches to the cab with the normal AMT slot and hook mechanism. The S10 is accurately represented with a separate chrome grille assembly for the LS version, and a body color grille for the SS version, along with the proper bumper assembly and hood with the center crease. The Sonoma's cab treatment consists of the hood with its double windsplits, and a totally inaccurate chromed grille assembly. To build an accurate Sonoma grille, dechrome the grille assembly and paint it body color and charcoal gray, using the box art photo while Bare Metal-izing the headlight buckets. Decals are provided for the appropriate

emblems and striping packages particular to each model of the truck.

In conclusion, while these kits were full of good intentions, it will take an extraordinary amount of work to build a truly accurate truck, whether it be a replica stock version or a slammed custom model. These kits' bad points tend to distract from a potentially great truck kit. With patience, skill, and a good working plan, a beautiful model can be the end result of either of these kits.



by: Ron Hamilton



### BITS & PIECES

- \* "New York's Finest!?! A routine traffic stop in New York for an illegal U-turn netted NYPD the city's most wanted driver. All in all, he had more than 633 license suspensions within the last five years! When the officers tried to "run a make" on him with the computer in their cruiser, the computer broke down! They took him to police headquarters where his complete record took almost two hours to run the 205 page report! Thanks to the November 17th edition of the Prince George's Journal for this gem!
- \* Attention! As of the November meeting, there is a new officer's position within the political structure of MAMA-Raffle Coordinator. This position will be ably filled by Jim Chesnutt. He will assist Matt with the myriad of Treasurer's duties (not to mention the raffle). We should all welcome Jim aboard and give him our help.
- \* Thanks! Last month there was a MAMA calendar handed out at the meeting. I would like to thank our own Harry Charon for making them up and having made them available to us!
- \* Congrats! Word reached me at last month's meeting that Dave Roehrlé will have his "Moonshine Express" pickup truck featured in FineScale Modeler. Waytogo, Dave!
- \* Rumor Mill! Word reaches me from our friends in the Three Rivers Automodelers that one of the "Little Three" may be doing a '53 Kaiser Manhattan. Also, that another model manufacturer has in their possession the '65 Dodge Coronet tooling! Stay tuned-film at eleven!
- \* Traitor! Did anyone notice our President, Larry Boothe hoisting a 'foreign' can at last month's meeting?!? For shame, Larry!
- \* Splinter groups! Word reaches me about a splinter group known as U.S.A.C. which is somewhat exclusive in its' membership (currently, only two individuals have the dubious distinction of meeting the eligibility requirements!), is positively thriving and has potential members begging to be recognized!
- \* Model display. John Southan, our friend at Hobbytown U.S.A. has intimated that he would like to organize a model display (probably after the first of the year). More info when it is available.
- \* Factory Recall! Seems as though our own Norman Veber of Replicas & Miniatures Co. of MD is up there with the big boys now. He has issued his very first factory recall. Seems as though a packaging error resulted in an incorrectly-sized set of photoetched spokes to be included in Replicas & Miniatures kit no. RM-59A Motorcycle wheels, photoetched-w/Dunlop 3.25-19 tires. All of the affected kits were sold at swap meets between July and October 1994. If you purchased one of these wheel kits, you can return it to them for replacement (even if you have started it!). When the correct kit is returned to you, you will be reimbursed for postage you spent, as indicated on your package. Norman Veber regrets any inconvenience this mistake may have caused.
- \* "Fit for a King!" Model King, that is! For those interested, the club still has a limited quantity of the Model King '63 Impalas for



sale for only \$19.00 each. If interested, contact Treasurer Matt Guilfoyle.

- \* **Sharp dressed club!** Advance warning- due to the ever-expanding membership of our club, we will be preparing new orders for T-Shirts, hats and jackets. If interested, advance payment is required. More info when available.
- \* **New Stuff** (At least to me!) Got a flyer the other day from **Machined Aluminum Specialties** and they have added a new wrinkle to the custom wheel market-a "**Modular Billet Wheel System**" which matches turned aluminum rim blanks with photoetched centers (some double cut). Each set of (4) photoetched centers is \$6.00 and each set turned aluminum center caps is \$5.00. I can't wait to give it a try!
- \* **Press Release!** Got a very nice bundle of press releases from **Revell-Monogram, Inc.** going into some detail on their 1995 model line-up which we covered in detail last month. We appreciate the nice folks at Revellogram wanting to keep us (poor) modelers informed (If they keep up releasing models like they are, we will be just that-poor!).
- \* **More Press Releases!** Seems as though the folks at none other than **Tamiya** have seen fit to release a model of a 1/24th scale **1994 Mustang GT convertible**. The difference between this Mustang and others already out are quite simple-it can be built with either the removable hardtop or a tonneau cover in place. Oh, I understand that it will be a curbside (no engine detail) as well. Tamiya is also releasing a 1/20th scale, partially assembled diecast **M1025 Hummer**. This replica is painted in an authentic USMC camouflage pattern, features complete military markings, including vehicle ID number, lettering at towing points, helicopter sling and shipboard tiedowns. The hood, doors, rear gate, trunk hatch, & turret hatch all operate.
- \* **Curbside Coupe?!** Came to my attention recently that someone connected with the San Diego Model Car Club has recently had some exposure to the curbside version of Testor's eagerly-anticipated **Aluma Coupe**. Directly quoting, they were not going to criticize this mid-generation test shot. For the most part, comments were largely favorable, especially the wheels. "The custom Coddington wheels are very cleanly molded, and will be chromed in the kit"; "The tires are perfect reproductions of the uni-directional types used on the real car and they fit the rims perfectly". Sounds good to me. I am sure that many people are waiting for these cars to hit the shelves!
- \* **Drag City!** Got a flyer from Jim Hanawalt of **Dragworks** the other day. He does 1/24th scale resin funny car bodies. He has such unique selections in his line as: '93/'94 Skylark, '93/'94 Saturn SC2 coupe, '92/'93 Daytona, '92/'93 Cutlass Stage II, '93/'94 Firebird Formula, '94 Acheiva, '93 Viper coupe, and a '94 Mustang. Wow! These bodies are designed to fit the current Revellogram chassis. His bodies are \$20.00 each, including shipping. Fair warning, though. He informs me that the '92/'93 Daytona is in short supply due to its popularity right now! You can still get one, but it may take some time, OK?
- \* **A Quick Note!** Got a nice note from **Tim Bongard** (of InScale Illustrated fame). He had some very nice things to say and asked that I let MAMA's BoyZ know about the **Primer Page** (for in-progress models) and the **Readers Concourse page** (for finished projects). Slides or sharp color prints with a short description of the model are all that is necessary. Thanks for the kind words and the info, Tim!
- \* **Video Cruisin'!** Got a catalog the other day from **Motorcam Automotive & Motorcycle video** [P.O. Box 4038 Wealthy Drive-Dept. F94, Akron, Ohio 44321 (800)240-1177]. They claim to list over 500 titles, anything from feature movies, do-it-yourself videos, monster truck rallies, and stock car and drag racing videos (even including Hot Rod's "**Fastest Street Car Shootout**"). Heck, they even have 295 titles under twenty bucks! "Pick up the phone, give 'em a call!"





## CLASSIFIEDS

Sharp-eyed MAMA's BoyZ will notice some ads below with a 615 area code. Where th' heck are they, you ask? Well, our 'party animal buddies' in the Knoxville club were kind enough to rerun some of our ads in their Knoxville Area Scale Auto Modelers newsletter, so we are merely reciprocating. Hope it helps, John, Trae & crew!

**WANTED-** 'Unwanted' Corvair engines from AMT Parts packs. Contact James Butt at (410)665-1124.

**FOR SALE-** Firestone wide whitewalls, Firestone red/white thin lines, Revell Pro Street rear tires w/outline painted. See Irv Arter at an upcoming meeting.

**WANTED-** Original decals and instructions for Tom McEwen Duster funny car. Contact Irv Arter at an upcoming meeting.

**WANTED-** Taillights and taillight panel from AMT '65 Chevelle wagon; extra unwanted cars, trucks, or parts for spray painting practice; Chevy Lumina #17 (D.Waltrip) direction sheet & glass. Contact Mark Wheeler at (410)536-8175.

**WANTED-** MPC "Hardcastle & McCormick" Coyote kit, '51 Chevy bumpers. Contact Dave Johns at 437-1893 (leave message).

**FOR SALE-** AMT Matchbox Scirocco kits, factory sealed, build either stock or competition. Contact Brian at (410)969-1936.

**WANTED-** AMT '32 Ford Vicky (White box/Silver car w/black fenders). Contact Brian at number above.

**FOR SALE-** Musclecards Series I, II, and the original Musclemar cards. See Tim Sickle at an upcoming meeting.

**WANTED-** Pictures, literature, articles on '68 Dodge Coronet R/T and '69 Dodge Charger R/T. Call Don Krone at (410)788-3119.

**FOR SALE-** Tamiya 1/12th scale Tyrrell 6-wheeler-\$20.00 or best offer. Contact Mike at (410)672-0914.

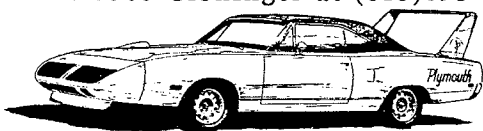
**WANTED-** Built or unbuilt Pontiac GTO and Firebird kits. Contact Tim Sickle (who else?) at (301)249-3830.

**WANTED-** AMC inline six cylinder engine from MPC Pacer kit. Prefer unbuilt/unpainted. contact Jim McGuinness at 87 Hanson Road, White Plains, MD 20695 (301)645-8051.

**WANTED-** Hot Wheels "Red Lines" & accessories. Contact Chris Chapman at (615)531-6187.

**WANTED-** Old Model Car magazines, model kit instruction sheets. Contact Kenneth King at (615)691-1846.

**WANTED-** VW Bug stuff-Models, toys, diecast, old instruction sheets, model boxes, etc. Also looking for old Model Car magazines. Contact Bruce Cloninger at (615)693-3496.

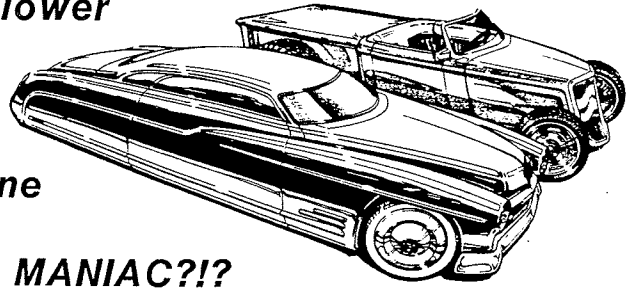


Ever notice that anyone driving slower

than you is

an IDIOT and anyone

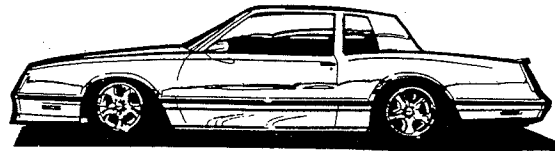
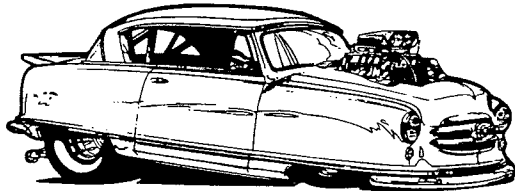
driving faster is a MANIAC?!?



Anyone having an item for the Newsletter whether it is a Bit, a Piece or even a Classified, it can be included by contacting one of the individuals listed below:

Timothy C. Sickie  
15905 Ark Court  
Bowie, Maryland 20716  
(301)249-3830

Norman F. Veber  
317 Roosevelt Ave., S.W.  
Glen Burnie, Maryland 21061  
(410)768-3648



# HAPPY HOLIDAYS

