

MARYLAND AUTOMOTIVE MODELERS ASSOCIATION

Volume 8, No.9 May 1996

by: "GTO"

About 45 people were in attendance at last month's meeting which had as its highlight a discussion with regard to final arrangements for our yearly *NNL sign-up*. Also discussed at length were themes for our '97 *show*. After much discussion and deliberation, the themes for next year's event will be *1967 Cars* and *Lead Sleds (50's Customs)*! So, if either of these "float yer boat", let's get crackin'! There was also some discussion about the recent reappearance of the club on the "*Coffee With....*" *morning show* on Tuesday preceding our show. I am told that it went well(?). Thanks to *Charlie Scheerer* for settin' it up again! Oh by the way, *Bob "Model Car Garage" Korunow* was in attendance at last month's meeting (as well as being able to attend our *NNL* event), so he is now officially a "*MAMA's Boy*". Guess this club will let anyone in (Jus' kiddin' Bob!)! Glad to have ya!

The raffle raised \$78.00 (as well as \$24.00 from the box). The club would like to thank the raffle donors listed below: *Brad, Mike Hemp, George A. Johnson Jr, Ron Bradley, Frank Anderson, Joe Atwell, Chris Whalley, and Replicas & Miniatures Co. of MD*. Special thanks also go out to those as shown below:

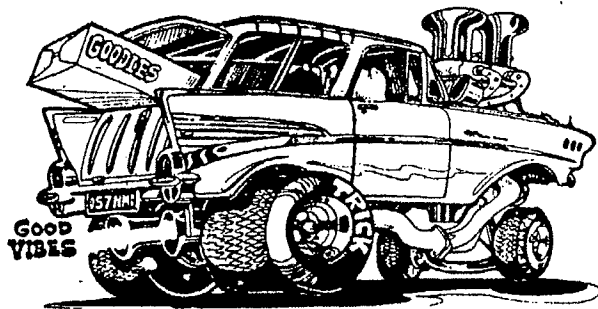
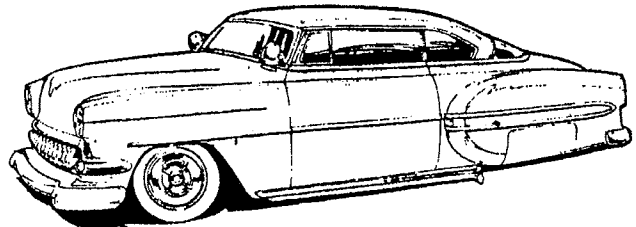
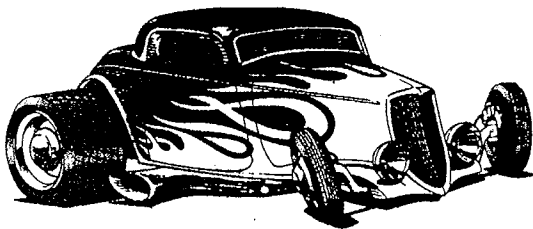
Phil DeGele
Timonium Hobbies
2189 Greenspring Drive
Timonium, MD 21093

Tom Walsh,
The ERTL Company
P.O. Box 500
Dyersville, IA 52040-0500

Ed Sexton/Bill Lastovich
Monogram/Revell, Inc.
8601 Waukegan Road
Morton Grove, IL 60053-2295

Bob Korunow,
Model Car Garage
537 S.Sequoia, Suite 309
W.Palm Beach, FL 33409

Mike Perkins,
RPM Craft House Corp.
328 N.Westwood
Toledo, OH 43607

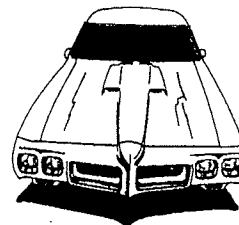


'96 Meeting Schedule

Well guys, word has just come down from the mountain regarding next years' schedule. It is still incomplete at this time, due to the fact that the college needs to finalize a few things before giving us our dates. When we receive the info, you'll be the first, er the second ones to know!

January 20th (Q305/307)
February 17th (K100)
March 16th (Q305/307)
April 20th (Q305/307)
May 19th (K100-Sunday!)
June 15th (K100)

July 20th (K100)
August **(TBD)**
September **(TBD)**
October **(TBD)**
November **(TBD)**
December 21st (K100)



P.S. In the event of significant snowfall, The Catonsville Community College "Snowline" number is (410)455-4567. That way, you "diehard" members with four wheel drive vehicles can verify that the meeting has not been canceled **before** you get there and find nobody else was able to get thru a foot of snow!

Sneakin' a Peek!

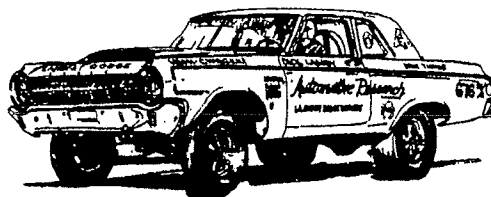
This column will appear as frequently (or infrequently!) as new releases from the manufacturers. The idea behind it is to give a "thumbnail review" of the releases as they hit the shelves with a detailed review to follow at a later date (hopefully!). We'll see how it goes! (Ed. Note: The kits are listed in no particular order)

(Nothin' new to report this month!!)



1994 Chevrolet Impala SS

(Revell #6399; 1/25th scale; modified reissue; 64 pieces; black, chrome, clear, clear red, vinyl tires, vinyl markings)



The only reason that I call this model a modified reissue is that it shares its engine block assembly and glass unit with the Caprice police car/taxi variant. Every other part is new, or modified to depict the distinctively different Impala SS.

First of all, this kit is one of Revell's "Snap Tite" kits, in that it can be assembled with or without glue. What it lacks in parts detail, the high level of engraving and precise fit of the parts can yield a cleanly built model that actually looks very good with proper detail painting.

The difference between Revell's "snap Tite" and AMT/ERTL's "Snapfast Plus" kits is that the Revell offering is a simplified glue kit with snap tabs hidden inside various assemblies, whereas the AMT/ERTL offering is basically a blown apart promotional model. The Revell offering is normally better detailed with an engine, and separate suspensions, while the AMT/ERTL offering has a glossier finish, and when assembled, is hard to distinguish from a promo.

Engine: A simplified, 8-piece depiction of the *260 hp, 5.7 liter fuel-injected V-8* used in the Impala SS, coupled to the *automatic overdrive transmission*. The upper half of the engine is divided into two parts, with the lower part snapping into place under it. The intake manifold and cylinder heads snap into place on the upper block. This assembly method eliminates many of the seams normally seen on most of the finer glue kits. Proper attention to detail and aftermarket

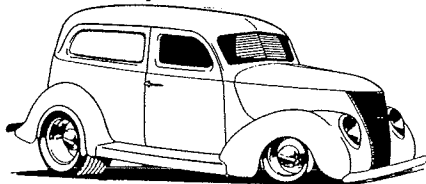
accessories will yield an accurate engine once the air intake/cleaner is added. The valve covers and front pulley assembly are separate items.

Once the engine assembly is installed in the chassis assembly, it can be completed by adding the separate exhausts, front and rear suspensions (w/disc brake detail evident at the front, missing at the rear), radiator, electric fans, and the wheel and tire assemblies. It should be noted here that to be entirely accurate, the wheels should be either stripped or dulled down, and those blasted Revell/Monogram Gatorbacks should be replaced with a set of BF Goodrich Comp T/As. All kidding aside, these tires look pretty good once everything is assembled.

The underhood compartment and interior tub is molded as one piece. The underhood compartment consists of a *molded-in battery, overflow, and windshield washer tanks*, and other underhood accessories. Detail paint and vinyl markings will bring this area to life. The interior tub includes a *molded-in back seat, floor console, and pedals*. The door panels, *2-piece bucket seats*, 2-piece dash assembly, firewall, steering wheel, and column with stalks complete this assembly. Take your time here, and a beautiful interior will be the result. The windshield and rear window assembly snaps onto the interior tub assembly, which snaps into the body.

The body is beautifully engraved, with *crisp Impala SS* and *antelope insignias* in all the right places. Flash and mold lines are cleverly hidden. The black plastic is so smooth that a good wax job could suffice in lieu of paint, depending on the modeler. The mirrors are separate, and include separate lenses. Chrome headlight buckets mount behind clear lenses, clear red tail lights, grille, and rear deck spoiler are other separate items. By the way, the *grille* in this kit is *chrome*, while on the real car it is body color, so it must be dechromed and painted to be accurate.

In closing, I really like this kit. The minor inaccuracies are easily addressed, and with a little time and careful detail painting, will result in a beautiful model. *Note: I wonder how many of these kits are going to be kitbashed with the police/fire/taxi Caprice kits and modified to replicate '94-'96 Caprices? I know of at least one modeler planning to build a black and olive Maryland State Trooper car!*

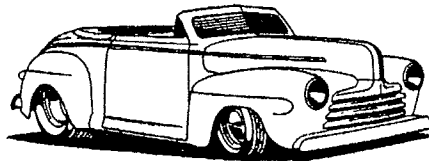


by: Ron "Big Car" Hamilton

Resin Rantings

Well gang, its back! And this month, we are gonna look at some new resin from All American Models in the form of his new '46-'48 *Ford Sportsman convertible*.

Once again, *Lee Baker* has produced a beautiful and dead-on accurate master of an early Ford automobile and Art Anderson is casting this gem in new smooth white resin. The quality of the kit is excellent, but I am equally impressed by the thoughtful planning and engineering. Initially, one would think that a rather convertible would be replica, but the chassis members is included so wheels and engine need available AMT '40 Ford.



rare Testor's '48 Ford needed to complete this frame with separate X- that only suspension parts, be taken from the readily

The kit consists of 23 pieces which consist of a one-piece body, all interior components, chrome bumpers and headlight buckets and small hubcaps. The stock chrome trim on the body and fenders already exists, merely needing to be foiled. A vacuformed clear windshield is also included along with a convertible boot (If the builder *has* to have an up-top, then the Testor's kit *will* be needed).

One flaw is found in the crooked contour of the passenger side rear wheel opening in the fender unit. With a rolled piece of medium grit sandpaper, this opening can be squared away in about a minute. Other parts cleanup is extremely minimal and is less work than some brand new plastic kits. The vent window frames are a bit thick, but these are direct copies of the Testor's pieces, and are easily thinned on the model. If they had been thinned before casting, they would have been broken in the box.

Having spent the equivalent of at least one mortgage payment on resin kits over the past few years, I can say this is one of the finest kits that I have seen with regard to accuracy, fit, and level of detail. At \$65, this kit may be cost-prohibitive to some modelers, but there is a lot of detailed resin in this kit. In defense of AAM, there seemed to be a noticeable price increase among all of the main vendors at NNL East. Anyway, ya pays yer money, ya takes yer choice! And this one is worth it!

(With apologies to Matt Guilfoyle for stealing his column!)

by: Lyle Willits

1964 Chevy Fleetside Pick-up

(Revell #7613; 1/25th scale; one version; 114 pieces; white, chrome, clear, vinyl tires)

I remember this truck being advertised by Dan "*Hoss Cartwright*" Blocker on "*Bonanza*" on Sunday evenings. Just think, you got a good western, surrounded by five Chevy commercials (*Ed. Note: Or was that five Chevy commercials surrounded by a Western?*). The box art truck vividly brought back that memory for me, and I wasn't disappointed upon opening the box.

First off, this model consists of a lot of pieces, especially in the body assembly, I assume to yield an accurate body/cab unit once fully assembled, as well as to reduce mold lines and sink marks. While it seems complicated, with careful assembly and attention to the instructions, a novice modeler should be more than able to complete this model. A *word of warning- Read the Instructions!* This model goes together a little differently than what you may be accustomed to.

The *19-piece engine assembly* is very well engraved and depicts a *283 cubic inch V-8* equipped with a *2-barrel carburetor*. The engine goes together conventionally with a separate oil pan, alternator with an attached bracket, and excellent engraving throughout, especially the valve covers, and rams horn exhaust manifolds. No doubt this engine will find itself in many a model needing a 283 V-8 before long.

The *interior* builds up from the floor and cab back. The bench seat is well engraved, and mounts to the floor. Unfortunately, it has no back. The inner door panels are separate units with well-engraved window and door cranks, and armrests. The dash, likewise well engraved, also includes a separate clear lens for the instruments. The steering column has separate stalks and the steering wheel is separate. The pedals mount directly to the floor.

The *multi-piece cab assembly* has glass which mounts from the inside, where the sunvisor and headliner detail is molded in. The radiator and core support are mounted as one piece with a separate fan shroud which locates to the front inner wheel housings, while the firewall takes up residence at the rear. The rear of the cab is separate, as is the front splash pan. A unique feature of the cab is the *upper roof structure* which is *separate* from the lower roof. Underhood accessories and cab emblems are separate also.

The *bed assembly* consists of 10 pieces, with a separate, non-opening tailgate, which is double engraved with a realistically "stamped" Chevrolet logo on it. The taillight panels and latches are separate, and very crisp. The bed floor has wood engraving and bed rails on both sides. This folks, is attention to detail! There are also mounts under the bed which align it to the chassis.

The *16-piece chassis assembly* includes a separate, simplified front suspension unit with a separate tie rod, a simplified rear axle/suspension system, four shocks, a single exhaust, and a spare tire with separate wheel and bracket. Again, this unit exhibits excellent engraving.

The *wheel and tire setup* consists of the Revellogram "No Name" vinyl tires with separate whitewall inserts, which attach to open wheels with chrome dog dish hubcaps. Note here that the hubcap mounts into a recess which snaps right onto the axle. There is no lug nut or hub detail present on the center of the wheel, so some sort of hub cap must be used or the entire wheel must be discarded for a different look.

Following the final assembly, you will notice the thought that went into the engineering of this kit, in the underhood details (separate heater unit, hood latch, upper and lower radiator hoses), the hood assembly (four pieces, like the real one), separate chromed accessories (grille, bumper, wipers, and mirrors), which can be dechromed at the builders discretion if he chooses to build the base version (paint everything white except the wipers).

In closing, I am very impressed with this kit. It may not be the easiest kit to assemble, but if you take your time, a beautiful model will be the result.

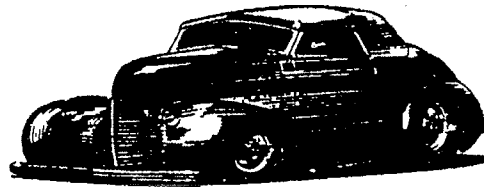
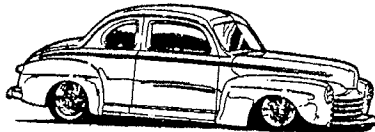
by: Ron "Truck Man" Hamilton

BITS & PIECES

- **Another new modeler!** *Harry Charon* would like to announce the arrival of his *first grandson, Jason McManaway*, who was born on the 4th of the month. He is 21" long and weighs 7lb, 15oz. *How long before ya have him buildin' Edsels, Harry?!* Congrats to you and the proud parents.
- **Getting married in the Turning Lane?!** *Candy Key* and *Clyde Rotramel* got married in the same spot where he proposed to her-*the left turn lane of Missouri Highway 50, in front of the Double D Express convenience store in Sedalia, MO.* The betrothed wore *black leather*, the minister stood next to their *Harley-Davidson.* A *monster truck*, complete with a *"I eat lowriders" bumper sticker*, held the guests. The ceremony didn't have the approval of the Missouri highway department, consequently, the ceremony lasted about three minutes, and then everybody left. *"Beautiful day to get married"*, Rotramel was quoted as saying. Thanks to the May 7th, 1996 edition of *The Prince George's Journal* for this one!
- **Corvette Dad dies!** *Zora Arkus-Duntov*, 86, the automotive engineer considered the *father of the Corvette*, died April 21st in Detroit. A Russian-born, German-trained engineer, Mr. Duntov went to work for Chevrolet in 1953, and managed to talk his way onto the Corvette team. Chevrolet spokesman William J. O'Neill is quoted as saying that *"without Zora Arkus-Duntov, the vehicle as it is today would not be here."* Mr. Duntov brought several innovations to the Corvette line-up which were later adopted by the rest of the industry. Chief among these were Fuel Injection (1957), and Four-wheel disc brakes (1965). Mr. Duntov recently celebrated his 85th birthday at the museum in Bowling Green, KY, the city where the Corvette is produced. A street near the museum is named in his honor. He is survived by his wife Elfi. Thanks to the April 26th edition of *The Washington Times* for this sad tidbit.
- **Hot Rod Lincoln!** A story in the May 5th issue of *Winston Cup Scene* reports on the construction of a *Lincoln Continental Mark VIII Winston Cup Research and Development car* by the Kranefuss-Haas team (#37 *"K-Mart/Little Caesar's" T-Bird!*) Michael Kranefuss explains that the car was built with the knowledge of both *Ford* and *NASCAR* in hopes of possibly finding a better car for Ford in this highly competitive series. It is scheduled for both wind tunnel tests and track time. Kranefuss also says that their team, not being at the top with Ford, may not get all the benefits other teams get, so they have to create their own benefits. *I can't wait for the street version!*
- **New Stuff!!** New goodies from All American Models include a *1959 Chevrolet Sedan Delivery*, a *1961 Pontiac Catalina 2-door hardtop*, a *1934 Duesenberg Weymann Boattail Speedster*, a *grille assembly to convert AMT/ERTL's '53 F-100 into a '54*, and in the near future, a *transkit to convert AMT/ERTL's '57 Chevy into an El Morocco.* Charge it!! Thanks to *Mr. Greenberg's "Strictly Stock" Online column!*
- **Prowler Mania!!** Chrysler Corporation said that since January 3rd, more than *36,000 potential customers* have flooded their dealerships, phone services, and the Internet seeking info about Chrysler's upcoming '97 Prowler!! Perhaps Chrysler will take that line from "Field of Dreams" to heart-*"If you build it, they will come!"?!*
- **German Engineering!** German automaker *Mercedes* has a fleet of *pit scooters* painted German Silver wearing the now-familiar three-pointed star which were going to be marketed in their *Mercedes Motorsports* catalog. That is, until someone higher up realized that these scooters were *made by Honda!* Thanks to the April 29th issue of *Autoweek* for this yuk!
- **Rouschstang?!** Seems as though there is another 'tuner' jumping into the aftermarket wars- none other than *Jack Rousch.* And why not? He has *10 Trans Am manufacturers' and drivers' championships, 12 IMSA GTO/GTS manufacturers' and drivers' championships, and 10*

consecutive sedan class victories at the 24 hours of Daytona-all in Mustangs. So, who better to pump up the Mustang? His first offerings will be a bolt-on aero package for '94-'96 'Stangs including a set of Rousch custom 17 X 8 inch custom wheels, and Rousch graphics (\$3,185); a suspension upgrade kit including springs, shocks, anti-roll bar and exhaust (\$2,105); and a 49-state legal 94hp engine upgrade for '94 & '95 5.0 liter V-8's which boosts power to 309 hp (\$2,783). In the works are rumored to be kits for the Ford F-150, Thunderbird, and Explorer. Again, thanks to *Autoweek* for this item.

- **NASCAR goes TV?!** The producers of *Baywatch* have just finished a pilot for *Touchstone television* called *Daytona Beach*. Scheduled for broadcast later this fall, the film stars Lee "Fall Guy" Majors as a retired driver who coaches his two sons. Touchstone hopes to take advantage of NASCAR's popularity with "the same formula of beach, babes and speed" that has made *Baywatch* so popular. *My only question is, what part will Pamela Anderson play?!*
- "Engineering Excellence?!" In March, the right rear quarter panel molding on President Clinton's 1993 Cadillac Fleetwood limo fell off during a New Orleans trip. After careful investigation, Cadillac spokesman David Roman blamed the problem on aftermarket parts. Later, at a press dinner, the President showed reporters the bumper sticker he had made to commemorate the occasion-"*My other car is Air Force One*".
- **SALE!** Mike Hemp informed Matt Guilfoyle that our friends at *Timonium Hobbies* are havin' a sale! Most currently available kits as low as only \$4.99! And Testor's and Floquil water base paints are also on sale! The sale is scheduled to run through *May 29th*, so ya better hurry!
- **More Club meetings!** Mark Wheeler's club, "*Our Model is Christ*" has their 1996 meeting schedule finalized. They meet on the *second Sunday* of the month from *2-5 P.M.* The dates are: Jan. 14th, Feb. 11th, Mar. 10th, Apr. 14th, May 12th, June 9th, July 14th, Aug. 11th, Sept. 8th, Oct. 13th, Nov. 10th, and Dec. 8th.



COMING EVENTS

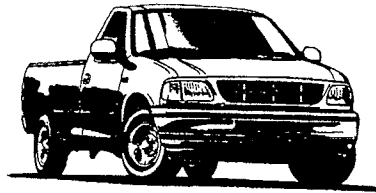
- *May 25th*- **Car Show** at Laurel Race Track in Laurel, MD (No further info available)
- *May 26th*- **5th Annual Classic Car Rally** from 6-9 P.M. at the **Big T, 833 Washington Blvd (Route 1)**, in Laurel, MD. Trophies, live music by the Outcasts.
- *May 26th & 27th*-**Heart of Maryland Classic Chevy Club meet at 75-80 Dragaway** in Monrovia, MD. Drag Racing, swap meet, car corral. For show info, contact Ed Zimmerman at (301)865-5270; for race info, call Bill Wilcom at (301)865-5102.
- *June 1st*-**Street Rod Nats East** at the Fairgrounds in York, PA.
- *June 1st-3rd* **Annual 58-64 Chevy show** sponsored by the Late Great Chevy Club of MD at Jeff Barnes Chevrolet. Call (410)964-4444 for info.
- *June 1st & 2nd*- **2nd Annual Super Stock Reunion** at Virginia Motorsports Park in Petersburg, VA
- *June 1st & 2nd*- **6th Annual "Summer Slam '96" Car and Truck show** at the Frederick county fairgrounds in Winchester, VA. *40+ classes for cars, trucks, and vans.* Pre-registration \$15.00, \$20.00 day of show. *Bikini contest June 1st at 3 P.M.* Proceeds to benefit Fremont Street Nursery of Winchester. For info, contact Shennandoah Custom Creations 2120 Valley Ave. Winchester, VA 22601.
- *June 2nd-22nd* **Annual Sport Chevrolet Chevrolet Antique Car Show** sponsored by Mid-Atlantic VCCA at Montgomery Auto Sales Park. For info, call Peter Basti at (301)474-1746.
- *June 7th thru 9th*-**Carlisle All-FORD Nationals** at the fairgrounds in Carlisle, PA. The giveaway car is a '91 Mustang GT equipped with a Paxton Supercharger, cam, Hurst shifter

w/line lock, 3.73 rear gears, shorty headers, Dynomax mufflers, and an alarm. It was purchased from the original owner, and all documentation is available.

- *June 8th-Antique Truck Show at Grimes Truck Center*, 1301 E. Patrick Street sponsored by *Mason Dixon Chapter ATHS*. Free admission. For info, call Grimes at (301)663-6262 or Allen Fisher at (301)898-5372.
- *June 8th: 10th Annual Northeast Challenge Model Car Show & Contest* at St. Michael's Church on the corner of Page Avenue & Ridge Road in Lyndhurst, NJ. from 9 A.M. to 5 P.M. Sponsored by the *East Coast Modelers Association*. 16 classes plus Master awards & theme classes! This years theme-*Mopar Mania*. For info, contact Tony Pocius (201)438-0398 (6-10 P.M. or Vince Lobosco (914)355-1123 (7-9 P.M.)
- *June 8th-Summer Funny Car Classic* at MIR in Budds Creek, MD
- *June 9th-22nd Annual Chevrolet Show at Catonsville Community College* sponsored by *Free State Region Vintage Chevrolet Club of America*. For info, call Charles Lewis at (410)485-3591.
- *June 9th- 23rd Annual Concours* sponsored by the *Corvette Club of America* at Criswell Chevrolet. For info, call Bob at (301)963-3089 or Gus at (301)663-4904.
- *June 15th: 1st Annual NNL Southern Nationals Model Car Show and Swap Meet* sponsored by the *Atlanta Car Model Enthusiasts* (or *A.C.M.E.* for short!) and Year One to be held at the Smyrna Community Center in Smyrna, GA. Hospitality suite Friday & Saturday night. For info, contact Paul Wehner at (770)985-5953 or send SASE to *A.C.M.E.*, 2459 Jack View Ct., Snellville, GA 30278.
- *June 21st thru 23rd-Carlisle All-Truck Nationals* at the fairgrounds in Carlisle, PA.
- *June 23rd- Sheehy Ford All Ford show* at Sheehy Ford of Marlow Heights, MD (Exit 7B, Branch Ave). See May 4th show for specifics and contact person.
- *June 23rd-5th Annual Classic Car Rally* at the **Big T** in Laurel, MD from 6-9 P.M.
- *June 28th thru 30th-7th Annual Rod & Custom Jamboree* at the Delaware state Fairgrounds hosted by the *Southern Delaware Street Rod Association*. Open to '72 & Earlier Street Rods, Customs, Classics and any year Pro Street. Top 25 plaques plus 6' Best of Show trophy, DJ all weekend, door prizes, Flame Thrower contest, Women's & children's games, neon parade, and much more! For info, contact Southern Delaware Street Rod Association c/o Paquette 516 Sussex Ave. Seaford, DE 19973.
- *June 30th: Automotive Toy Show* presented by *Model King Productions* at the Wayne PAL building in Parsippany, NJ from 9 A.M. to 3 P.M. Plastic, resin and diecast will be on hand. For info, call Model King at (908)240-3987.
- *July 12th thru 14th-Chryslers at Carlisle* at the fairgrounds in Carlisle, PA. The Giveaway car is a '65 *Satellite convertible*.
- *July 14th-5th Annual Classic Car Rally* at the **Big T** in Laurel, MD from 6-9 P.M.
- *July 21st- Wilson-Powell All Ford show* at Wilson-Powell Lincoln-Mercury in Marlow Heights, MD (Exit 7B, Branch Ave). See May 4th show for specifics and contact person.
- *July 26th thru 28th-Summer Carlisle* at the fairgrounds in Carlisle, PA. The Giveaway car is a '66 *Buick Grand Sport*.
- *July 31st-Mountain Motor Nationals* at MIR in Budds Creek, MD
- *August 3rd- 4th Annual Midnight Modelers Model Car Contest & Swap Meet* at Hugo's Showhall on Route 7 in Bealeton, VA from 9 A.M. to 3 P.M. For info, contact Jerry Frazier (540)582-1009 or Dave Tolson (703)221-6923. This years' theme is *Drag Racing*.
- *Aug 4th-5th Annual Classic Car Rally* at the **Big T** in Laurel, MD from 6-9 P.M.
- *Aug 9th thru 11th-Goodguys Carlisle Rod & Custom Classic* at the fairgrounds in Carlisle, PA.
- *Aug. 17th: Volunteer Classic III* presented by the *Knoxville Scale Auto Modelers* at the Holiday Inn Convention Center World's Fair Site, Knoxville, TN from 9 A.M. to 3:30 P.M. Hospitality Suite on both Friday & Saturday nights. For info, call John Larkin (423)239-7070 (Vendors), or Kenny King (423)691-1846 (Show info).
- *Aug. 17th-Jet Funny Car Nationals* at MIR in Budds Creek, MD

- *Aug 18th- Abyss Scuba Center All Ford show* at the Abyss Scuba Center, 6455 Old Alexander Ferry road Clinton, MD. See May 4th show for specifics and contact person.
- *Aug 23rd thru 25th- Corvettes at Carlisle* at the fairgrounds in Carlisle, PA.
- *Aug 23rd thru 25th- HOT ROD Magazine Power Festival* at Atlanta Dragway in Commerce, GA.
- *Aug 25th-5th Annual Classic Car Rally* at the **Big T** in Laurel, MD from 6-9 P.M.
- *Sept. 11th-Yates Auto Parts Pro Stock Open* at MIR in Budds Creek, MD
- *September 21st-Sheehy Pontiac and Ford show* at Springfield Sheehy Ford and Pontiac dealerships in Springfield, VA. See May 4th show for specifics and contact person.
- *Oct 3rd thru 6th- Fall Carlisle* at the fairgrounds in Carlisle, PA.
- *Sept. 29th-Ford Fever Classic drag race, car show, new car display, and flea market* at MIR in Budds Creek, MD
- *Oct. 5th-Superchargers Showdown* including *Funny Cars, Dragsters, Alteredes, Wheelstanders, and Pro Modifieds* at MIR in Budds Creek, MD.
- *Oct 5th- National All Make Show plus Hot Air Balloon Races* at the St. Charles county fairgrounds in LaPlata, MD. See May 4th show for specifics and contact person.
- *Oct. 12th: NNL Seventeen* sponsored by the *Cleveland Automotive Modelers Society* at the Lucas County Rec Center in Maumee, OH from 2 P.M. to 8 P.M. This years themes are *Street Rods (Hey, Lyle!)* and *Lowriders*. So, let's get crackin', guys! For info, send an SASE to Rick Forrester 4736 Porter Road North Olmstead, OH 44070.

CLASSIFIEDS



FOR SALE- Various automotive books (including out-of-print *Automobile Quarterlies*), and high quality models such as *Pocher, Protar, Tamiya*, etc. Call Tom Barry at (410)876-6643

FOR SALE-Thinning collection (not quitting), list available. Contact Harold Bradford at (301)604-8591 or see him at a meeting!

FOR SALE- *Original Monogram "Big Deuce" kit*, mint, *box bottom still sealed. \$200.00 + shipping.* Original (mid 70's) Aurora "Super Magna-Traction" '55 Chevy Nomad in chrome-purple, still sealed on display card, \$30.00. Contact John Larkin at (423)239-7070.

FOR SALE- 283 Chevy engine equipped with '461' heads, Crane Cam, Edelbrock intake, HEI distributor- \$650.00. Contact Tim Powers at (410)255-3976.

WANTED- '69-'72 Nova (unbuilt). Call Steve Siboroski at (410)551-0314 after 5:30.

Anyone having an item for the newsletter, whether it is a Bit, a Piece or even a Classified, it can be included by contacting one of the individuals listed below:

Timothy C. Sickle
15905 Ark Court
Bowie, Maryland 20716
(301)249-3830

Norman F. Veber
317 Roosevelt Ave., S.W.
Glen Burnie, Maryland 21061
(410)768-3648

