

MARYLAND AUTOMOTIVE MODELERS ASSOCIATION

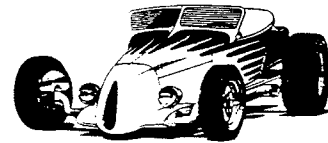
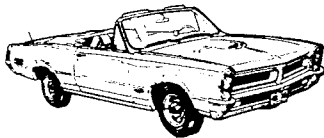
Volume 11, No. 7, March 1998

by: "GTO"

(The Maryland Automotive Modelers Association is a chapter of the IPMS in addition to the AMS)

Well gang, the February meeting was jam-packed with about 58 people in attendance who were there to take advantage of the **Club Auction**, which will be used to defray the costs associated with our **Annual NNL show**, which is coming up next month. The auction raised over \$1,000 (*again!*) (*actually, \$1,022.50 to be exact!*). Thanks go out again to **Ron Hamilton**, who was very generous, not only with his purchases, but also with the donation of some older kits which really helped out the club's bottom line. Thanks to everyone who not only donated items to be auctioned, but also to those who purchased these items. Now, while I have your attention, if you intend to be on hand for the NNL, whether to enter or to help out, **sign up ad come on out and give us a hand!** Our Prez, **Lyle Willits** has been mailing out responses to our show to people from *as far away as Minnesota*, and *Massachusetts!* No guarantee that these people will shoe up, but remember, the last show we did have **450 models on display!!** So, bring out those models, and display 'em, and help out at the same time!

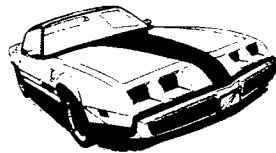
The raffle raised zip (*we had no raffle*), although the box did pull in **\$26.00**.



'98 MEETING SCHEDULE

Well guys, here it is, just as I promised ya! Ain't it great when things work out like they are supposed to? Thanks to Matt Guilfoyle for his hard work in ensuring that we have a place to meet every month next year! Yup, we are back at the **Greenbelt Community center** multipurpose room for the dates listed below. As usual, the meetings start at noon, and last until 3 or 4 P.M. (*and maybe even later, depending on what is going on!*).

January 17th
February 21st
March 21st
April 18th
May 16th
June 20th



July 18th
August 15th
September 19th
October 17th
November 21st
December 19th



From the Baltimore Beltway (RT 695): Take Exit 7, Route 295 (*Baltimore-Washington Parkway*) south towards Washington approx. 18 miles to Route 193 (*Greenbelt Road*), and exit. When on the off-ramp, stay to the right and merge right onto Southway (see below).

From the Washington Beltway (RT 495): Take Exit 22 north, towards Baltimore. Stay in the right lane and take the first exit onto Route 193 (*Greenbelt Road*). When on the off-ramp, bear to the right and take Greenbelt road west, towards College Park. Stay in the right lane and immediately after passing over the Parkway, make a right (*at the light*) onto Southway (*see below*).

Once on Southway: Go straight to the second (*2nd*) STOP sign. Make a left onto Crescent road. Go to STOP sign and make a right into the parking lot behind the Greenbelt Library. Once in parking lot, look to right. The large, white building is the Greenbelt Community Center. Enter building using doors near fenced tot lot. The multi-purpose room is on the second floor. There is an elevator to the left of the entrance.

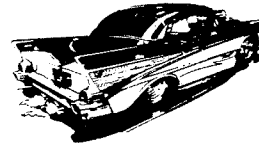
SNEAKIN' A PEEK!

This column appears as frequently (*or infrequently!*) as new releases from the manufacturers. The idea behind it is to give a "thumbnail review" of the releases as they hit the shelves with a more detailed review to follow at a later date (*hopefully!*). We'll see how it goes! How about this, gang? To better identify possible kit reviews, at the end of the item on the kit, the words 'Available' or 'Not Available' will appear. Obviously, any kit which is available may be reserved by a club member with a simple call to the Editor. Conversely, a kit which is 'Not Available' was either already reserved by someone, or was something new inserted by yours truly, and paid for with my hard-earned moolah! (*Ed. Note: The kits are listed in no particular order*):

- **Lamborghini Diablo Plus Pack** (AMT/ERTL #8064): Molded in Purple....reissue of the earlier Diablo kit (not the Aero), with paints (red, blue, silver, flat gray, and gloss/flat black), a paint brush, and a tube of glue....sports AMT's new box art....'CJS 104' AZ, and 'DIABLO' NH plates (*Available*)
- **Aerovette® Concept car** (Revell-Monogram #7638): Molded in white....18-piece mid-engine small block V-8 w/finned chrome valve covers, and chrome air cleaner....platform-style interior w/drop-in door panels, and 2-piece dash....Corvette aluminum wheels w/incorrect Goodyear GS-C tires....decals consist of Aero Vette scripts, and several crossed flag logos (*Not available*).
- **'50 Chevy Stepside PlusPack** (AMT/ERTL #8051): Molded in Off-white....reissue of the earlier '50 Chevy street machine pick-up with the same colors as the Diablo listed above)....a paint brush, and a tube of glue....again, as in the Diablo, sports AMT's new box art....'ROSY' AZ, 'SLICK 50' VA plates, custom panels in two different colors (*Available*)
- **'78 Trans Am** (AMT/ERTL #6316): Molded in Lt. Gray....20-piece Pontiac V-8 w/a 3-piece shaker hood scoop....tub-style interior, 2-piece (each) bucket seats....7" Snowflake wheels, rather than 8" deep dish snowflake wheels (WS6 suspension) mounting horrendous old Goodyear 8.25-10.000-15 bias-ply tires, rather than proper radials....separate, plastic (not clear T-tops....decals include the 'Blackbird' striping, and appear to be too wide, as well as not even being gold....The hood bird also appears to have a white center in it, rather than being clear, so it ends up black upon installation on the car (*Available*)

[Note to all concerned: It has been brought to my attention of late that there is a potential problem with regard to the review articles published in this newsletter. Let me give you a little background on this subject. The model manufacturers (AMT/ERTL, Revell-Monogram, and Lindberg) all attempt to send our club current releases in exchange for our critiques on what we liked and didn't like about them. That means that we need to get written reviews published in the newsletter in a reasonable time frame to accomplish this. If you will recall, I have stood up at recent club meetings to enlist the aid of the members in attendance to get kit reviews. At present, Ron Hamilton has done more than his fair share of reviews. In the past, Lyle Willits also did his share of reviews, as well as yer Fearless Editor. If anyone wishes to see reviews written by someone else (or take a crack at it themselves), they need to contact me, in order to determine which kits are available for review. I don't have the time to chase anyone down and browbeat them for a review. Rest assured though, if you take a review sample, I will be your worst nightmare if I don't get a review within a reasonable time (right, Leonard?). You may also rest assured that if you take a kit for a review, and do not return it within a reasonable time, that you will not receive another!]

1957 CHEVY BEL AIR



[AMT #8315; 1/25th scale; 154 pieces; light gray, chrome, clear, clear red, (5) soft vinyl tires w/whitewall inserts]

Having built AMT models since 1960, I can say with some knowledge that this is the most accurate, most detailed kit ever produced by this manufacturer, but one would never know that from the box-art model. Don't let the poorly detailed, toy-like model on the box lid fool you. Upon opening the box, you find everything bagged, even the chrome. It's about time!!

Engine: The 283 'Power-pack' engine (*equipped with dual quads*) builds up from 27 highly-detailed pieces, including plastic heater hoses, and upper and lower radiator hoses, with hose clamp detail. To save

some space, lets just say that ALL of the engine components are fantastically accurate and this engine rivals or surpasses the 265 in the Revell-Monogram '55 Chevy. Included is the rare (*in real life*) triangular air cleaner. Considering the incredible detail level of this kit, I would have liked to have seen a highly-detailed Rochester fuel-injection system, but I suppose this can be pirated from the AMT '57 Corvette kit, with a scratchbuilt air induction tube. Contrary to popular belief, fuel injection was a rare option on the '57 Chevy, so AMT has provided the more 'common' optional power pack unit. Provided on the instruction sheet is the Firing Order for the spark plug wiring, which is also included!! However, **IGNORE** the specified wire lengths and the routing of the wires directly over the headers to the distributor. The plug wires should go down and behind the headers and up along the rear of the block to the distributor.

Chassis: The highly-detailed floor pan is a separate piece from the very accurate frame. The front suspension is comprised of nine pieces, and with a little work, the steering can be made posable. The rear suspension also consists of nine pieces, including separate shock mounting plates! The exhaust system is assembled from six pieces. The two-piece gas tank completes the chassis. I have original factory illustrations of a 1955 Chevy chassis, and this unit could **NOT** be any more accurate!

Underhood detail: There are seventeen individual pieces to make up the engine compartment including separate inner wheel wells, air ducted from the headlight intakes, firewall, wiper motor, master cylinder, battery, etc., etc. The two-piece steering box actually attaches to the Pitman arm on the tie rod! The dual horns are engraved all the way down to the little bolt heads!

Wheels/Tires: The chromed stock wheel covers are well done and receive separate spinners. There are also engraved valve stems! The new (*for this kit*) tires are beautiful BF Goodrich Silvertowns with excellent tread pattern detail and separate whitewall inserts. The whitewalls look a little too small for the prototypical 1957 tire, which were two and a half inches. This is just my opinion, but I think the American SATCO tires are far more accurate as far as the whitewall width.

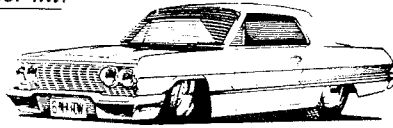
Body: The body has been accurately represented; probably the most accurate '57 Chevy body ever made in this scale. The hood **AND** trunk are separate pieces, with simple, working trunk hinges. The non-functional hood hinges are the most highly-detailed I've ever seen in **ANY** scale. The underside of the roof has headliner, sun visor, and dome light detail. The front and rear 'glass' are separate pieces, and are keyed to fit perfectly. The vent windows are separate pieces as well. The famous side spears are engraved in the body and chrome foil is included in the kit (*I'll stay with the old tried and true Bare Metal foil, thank you*). Door handles, wipers, and the 'V' for the hood and trunk are all individual pieces found on the chrome tree. The front bumper is 'open' to allow for the separate grille and the top of the grille 'mouth' is a separate piece which mounts on the leading edge of the hood. The tail light pods and rear bumper are very accurate. The headlight units show engraved screens for the air vent units, unique to the '57 Chevy. **NOTE:** My kit has holes going through the tail light pods. If you find this, cover the inside of the taillight reflector with foil first before installing the clear red lens. This also applies to the parking lights in the grille bar, which receive separate, clear lenses. If these holes are left open, it will produce a toy-like appearance. **ALSO:** The body-colored grille should probably be covered with chrome foil first and tinted gold. Also gold-tinted should be the three 'louvers' on the leading edge of the front fenders, and the two 'Vees' on the hood and trunk. I have used Tamiya clear yellow with a touch of Tamiya clear orange with good success. OOPS.....almost forgot to mention the separate front bumper 'rubber' spears and the optional factory fender skirts.

Interior: The interior builds up platform-style from the floor pan. The side panels extend back to form the trunk walls (*Remember-the trunk opens!!*). The engraving on all interior parts is just outstanding. Excellent engraving is found on the dash, which has brake, clutch, and hand brake detail included. The steering wheel is beautiful with an *in-scale* horn ring! The steering column actually features the gear shift molded in the up position. For the trunk interior, a fifth tire and a 'steel' wheel is provided. The wheel is molded with an open center, but for accuracy, the builder should drill out the five lug nut holes, which are engraved.

Decals: Three underhood decals, a jacking instruction decal for the trunk lid (!), and a dealer window sticker. Also, two gold-colored 'CHEVROLET' scripts are included to be used as an alternative to the engraved scripts.

What more can be said?! Actually, *a lot more can be said about this kit*. Suffice it to say, this is undoubtedly the finest kit ever produced by AMT. For you high-tech detail types, a limited issue upscale (?) version is forthcoming with photoetched parts. In the meantime, I have tried the Model Car Garage photoetch kit currently available. All of the MCG parts can be used **EXCEPT** the aluminum side spear inserts and the

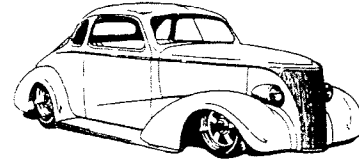
factory-optional trunk lid trim. The photoetched grille in the MCG set fits nicely in the AMT grille surround. Remember that the MCG set was designed for the *PREVIOUS ISSUE* of the AMT '57 Chevy, and all the parts fit *PERFECTLY on the older kit*.



Lyle "Can it get better than this?!" Willits

HOT RODS THREE-CAR SET

(AMT/ERTL #8457; 1/25th scale reissue; 300+ pieces)



Well, it seems as though the gang at AMT/ERTL has seen fit to release this set consisting of the 34 Ford 5-window Street Rod coupe, the recently updated and reissued 40 Ford sedan delivery, and the 37 Chevy cabriolet, which has been absent from the line-up for several years. Since the Fords are currently in the company's line, and were recently reviewed by myself and several other people, I'll concentrate on the Chevy.

Warning!! Danger Will Robinson, er...sorry about that-just got carried away there for a second.

What you get in the box is not what is represented on the box model, and that does not make me happy. There is no question that the kit in the box is pretty nice, but it does not represent the box art car in several respects, which I will point out as we go along.

Engine: Two complete engines, with three building versions. Version one is a twenty-piece depiction of the 216 cu. in. straight six engine in factory stock form. Aside from a little flash that needs attention, this engine goes together easily, and with proper paint and a few detailing parts will yield a nice looking engine. Version two is another version of the six-cylinder engine, this time with some vintage speed parts. Included in this version is a finned valve cover, a split manifold with a pair of downdraft carbs and air cleaners, and headers and tail pipes. The third version gives you a *twenty-three piece blown 427 rat motor*, set up for a vintage gasser application.

For rolling stock, you get two complete sets of *wheels and tires*. For the factory stock version, you get a set of steel wheels with hubcaps and Firestone skinnies. For the custom version, a set of *Cragar S/S* mags are present, with L60-15 Goodyears in front, and drag slicks in the rear. On the box, it says that a set of *American five-spokes* are included, and the box art car depicts this. Guess what-they are not there. Hmmmm!

The *chassis assembly* consists of twenty-five pieces, some of which are used for the stock version, some for the custom version. The parts used for the factory stock version are quite accurate in appearance. Using the custom front springs and suspension pieces will give the car a 'nose up' attitude reminiscent of a 1960's gasser. There are no parts included to lower the front and rear suspensions as shown on the box art car. Hmmmm!

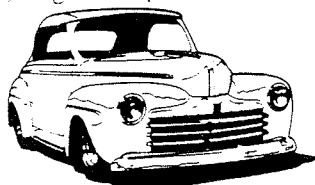
There are two *interior* variations. The factory stock version is comprised of six pieces, which build up from a tub-style interior. The custom pieces will yield a 1960's gasser style interior with a set of rolled and pleated bucket seats and dash pad, three-spoke steering wheel, gauge pod, shifter, shoulder harness, and roll bar.

The *body* subassembly is pretty simple in that the fenders are separate (*these should be installed on the car prior to painting for a better fit*), separate inner fenders, and headlamp pods. There is a choice of a convertible boot or an up-top, which is clear. The top should be carefully masked and painted in the builder's choice of flat or semi-gloss paint.

The body final assembly consists of a choice of standard or deluxe bumpers, a two-piece hood with an ornament, chrome headlamp bezels with clear lenses, stock grille, spare tire, and tail lamps, rumble seat pads, and door and trunk (*rumble seat?*) handles. The custom (?) final assembly gives us a vertical bar grille or a grille blank, a choice of the stock hood with a scoop or a clear hood, bumperettes, side pipes, and a huge tail lamp.

In summation, it seems as though this kit will yield an accurate factory stock version, a nice mild custom, or a 1960's style gasser. In the 1960's (*I had one*), and the parts are the same. If your desire is to replicate the car as it appears on the box, you'll have to raid the parts bin and fabricate a lowered front suspension to get the proper attitude. I like this kit, but we should not have been misled by the box art model.

Somehow, I figure the parts for the box art car had been engineered, they just didn't make it into the box. Ouch!



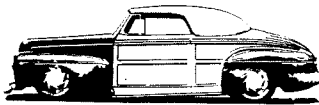
BITS & PIECES



By: Ron Hamilton

- **Extreme Production!** According to several of the full-size truck mags, the *Chevy Extreme concept pick up truck* will actually make it into production in the Fall of '98! The package should consist of special front/rear fascias, a color-keyed grille, custom side cladding, and wheel flares. It will also have the ZQ8 suspension w/gas pressure shocks, tweaked power steering, ABS, and 16" cast aluminum wheels mounting 235/55TR16 tires. It should be available in base or uplevel trims, regular or extended cab, and Fleetside or Sportside box, with your choice of either a four or a six-cylinder engine.
- **Designer bags!** We've all heard of *air bags* right? No, I'm not talking about the *politicians in Washington, D.C.!* Siemens AG has developed a new *air bag-for feet!* This 3" bag, lies beneath the driver's floor mat. In the event of a crash, they are designed to change the angle of the feet to prevent them from being crushed by the pedals. These bags are scheduled to appear next year on two luxury German cars (Duh! I wonder which ones?)
- **"The new Plastic Fanatic is here! We're somebody!"** The latest issue of the '*Fanatic*' is hot off the presses (*February/March, issue #53*), and it includes a little *profile of MAMA's BoyZ* (P.S. Submitted by yours truly) within its pages. It also includes some nice coverage of the *Toledo NNL* this past October, and kudos go out to our own *Lyle Willits* who had his *Lindberg '61 Impala* photographed. *Waytogo Lyle, and thanks, Gregg!*
- **"Can I watch?!"** Anyone hear about the *motorcycle shop in Bowie* raided in late February? Well, seems as though the police had reason to believe that the shop may have been run by a *motorcycle gang member*, and was part of a *national motorcycle 'chop shop'*. Well, when they raided it, and served the search warrants, they began the search, but abruptly stopped when they found a *softball-sized explosive device!* They moved outside, and brought in the bomb squad. Traffic continued to flow, except for one individual in particular. This gent became upset that officers wouldn't let him watch the bomb squad work, refusing to leave the shoulder of the road. At this time, police demanded he step out of the vehicle. Surprise! Surprise! Officers found him to be carrying *crack cocaine!!* They arrested him, searched his vehicle, and drove him down the road to the police station (out of sight of the bomb squad investigation). The shop owner? He was arrested on an unrelated warrant. *Is this guy a potential Darwin award nominee or what?!*
- **"Doubly desirable Aerostar!"** 80-year-old A. B. Paul Jr. was the victim of car theft not once, but *twice* in the span of *only nine hours!* *Five people* from the ages of *14 to 50* were arrested in *the two unrelated thefts*. Paul was visiting friends when they spotted his 1989 Ford Aerostar being driven away on a Tuesday afternoon. Paul's friends took off in 'hot pursuit'. The thieves crashed the van into a ditch, and ran away, while Paul's friends gave chase with a 'Louisville Slugger'. They eventually stopped and police tracked down and arrested three teens on auto theft charges. Early Wednesday, it happened again. He received a call at 4 A.M. asking him if he had a Ford Aerostar van. He walked outside, and sure enough, it was gone! Two men were arrested on Grand Theft charges after attempting to buy beer and cigarettes with Paul's credit card.
- **New shop! Michaels** (no relation to our own Mike Hemp), is in the Lutherville area, about five minutes away from the Ruhl Armory. They are a 450-store craft shop chain similar to MJ Designs. They carry all sorts of craft items such as silk flowers, art supplies, and stitchery supplies, as well as.....surprise! Models! If you are in the neighborhood, stop in and check 'em out. They are located in the York Ridge shopping center, at 52 W. Ridgely Road in Lutherville. Thanks for the scoop, Mike!
- **More meeting dates!** Here are the *1998 dates* for *Mark Wheeler's club, "Our Model is Christ"*: January 11th, February 8th, March 8th, April 5th, May 3rd, June 14th, July 12th, August 9th, September 13th, October 11th, November 8th, and December 13th. The meetings are held at the First Christian Church on 320 Oak Manor Drive in Glen Burnie, MD from 2-5 P.M. in the Fellowship hall. For info, call (410)761-3863 or (410)551-4230. Bring a friend!

- **More Diecast Muscle!** The gang at *Matchbox* are at it again! They are set to release a *1970 Plymouth GTX*, a *1966 Ford Fairlane GT*, a *1966 Chevelle SS396*, a *1969 Dodge Charger*, a *1971 Dodge Challenger R/T*, and a *1970 Olds 442 W30 convertible*. These will all be in 1/43rd scale, and will cost \$29.95 each. You can get 'em by calling Matchbox at 1-800-858-0102 Monday thru Friday from 9 AM to 9 PM.



COMING EVENTS



- *March 22nd*- Toy show at the Gilbertsville Fire Hall.
- *March 28th-12th Annual NNL East* in memory of John Slivoski from 9:30 A.M. to 5 P.M. at the PAL building on Baldwin Road in Parsippany, N.J. Themes this year are "*King of the Street*" which will include an award for the *best AMC big block car*, *best Ford big block car*, *best GM big block car*, and *best Mopar big block car*. The other theme is "*King of the Road*", an award for the best model of a *heavy, diesel-powered big-rig truck*. For general info or flea market spaces, call Ken Walkley at (201)641-0344, or E-mail at TSSMCKJW@aol.com.
- *April 5th*- Capital Miniature Vehicle Auto Collecting club's **Spring '98 meet** at the fire Hall in Dunn Loring, VA from 9 A.M. to 2 P.M. SASE for info to James William Brostrom 6632 Cardinal Lane, Annandale, VA 22003.
- *April 5th*- **Coming Out '98 (!)**, a rod run sponsored by the Southern Knights Rod & Custom Car Club at the Charlotte Hall shopping center on Route 5 in Charlotte Hall, MD. Cutoff year for entries is 1982. For further info, call Roger Hamilton at (301)292-3238.
- *April 23rd to 26th*-**Spring Carlisle** at the Fairgrounds in Carlisle, PA.
- *April 25th-7th Annual Mid-Atlantic NNL model car show and swap meet* sponsored by the *Maryland Automotive Modelers Association* at the Ruhl Armory in Towson, MD from 9 A.M. to 3 P.M. Themes this year are '*1967' Cars*, and *50's Customs*. For vendor info, contact Norman Veber at (410)768-3648, and for show info, contact Lyle Willits at (410)796-2768, or e-mail him at MAMAppez@aol.com.
- *May 1st to 3rd*- **The North American Model Car Championship** at the Holiday Inn-Livonia West, 17123 N. Laurel Park Drive, Livonia, Michigan 48152, (313)464-1300, or (800)465-4329. For info, send *two first class stamps* to Contest Headquarters, 205 East Hibbard Road Owosso, Michigan 48867, or E-mail siegman@shianet.org.
- *May 8th to 10th*-**Carlisle Import-Kit/Replicar Nationals & Custom Compact Power Jam** at the Fairgrounds in Carlisle, PA.
- *May 14th to 17th*- **24th Annual East Coast Military Vehicle Rally** at the Aberdeen Proving Grounds.
- *May 16th*- **All-Ford show** at 75-80 Dragway in Monrovia, MD
- *May 17th*- **A Day by the Bay XV, Downs Park Spring Dust-off** in Pasadena, MD from noon to 4 P.M. Cars up through 1975 only, dash plaques to first 70 registered vehicles. Bring a lunch-picnic tables, shade trees, the bay, and a snack bar are located at the park!
- *May 24th-12th Annual Supreme Chevy/All-GM Sunday* at 75-80 Dragway in Monrovia, MD. Two-day event featuring Drag racing, swap meet, car show & car corral. All Chevy-powered and GM vehicles welcome!
- *June 5th to 7th*- **Carlisle All-Ford Nationals** at the Fairgrounds in Carlisle, PA.
- *June 6th & 7th*- **14th Annual Super Stock Reunion** at Norwalk Raceway Park in Norwalk, Ohio. Nitro Top Eliminator, funny car, fuel bike, Jr. Fuel, Comp Eliminator, A/Gas, Pro Nostalgia, Nostalgia Super Stock, Pro ET, Flowmaster Muffled bracket, Factory Lightweight Concours, '400' Club (*all 1967-1971 factory 400 hp cars*), and display are some of the things expected to take place. More info? Visit the web site at superstockreunion.com!
- *June 6th*-**Late Great Chevy show** at Win Kelly Chevy in Clarksville, MD
- *June 7th*-**Twenty-fifth Annual Antique and modified Chevrolet Car show and flea market** at Sport Chevrolet in the Montgomery Auto Sales Park on US 29 & Briggs Chaney road. For info, call Jack Thompson at (301)384-1932, or Maureen Blades at (301)262-5148.
- *June 14th*- **10th Anniversary Quince Orchard Benefit Auto Show** at Quince Orchard High School, on the corner of MD Rts. 124 & 28 in Gaithersburg, MD, from 8 A.M. to 4 P.M. Dash plaques, door prizes, goodie bags, food onsite, swap meet.

- *June 19th to 21st- Carlisle All-Truck Nationals* at the Fairgrounds in Carlisle, PA.
- *June 27th-All-Ford and Mustang club show* at Crystal Ford in Silver Spring, MD.
- *June 28th-11th Annual Mid-Atlantic Chevelle Show & Swap meet* from 9 A.M. to 5 P.M. at the Big 'M' drive-in in Churchville, MD. For info, call Tom at (410)796-7725 or Rick at (410)879-7893.
- *July 10th to 12th- Chryslers at Carlisle* at the Fairgrounds in Carlisle, PA.
- *July 19th-Fort Smallwood Park Rod Run Picnic* sponsored by *Vintage Tin of MD.*
- *July 24th to 26th- Summer Carlisle* at the Fairgrounds in Carlisle, PA.
- *Aug. 7th to 9th-Goodguys Rod & Custom Classic* at the fairgrounds in Carlisle, PA..
- *August 28th to 30th- Corvettes at Carlisle* at the Fairgrounds in Carlisle, PA.
- *September 12th-34th Annual Laurel Lions club Auto Show and Flea market* at Laurel Park, in Laurel, MD.
- *October 1st to 4th-Fall Carlisle* at the Fairgrounds in Carlisle, PA.
- *November 7th- 1998 NNL Southern Nationals* from 10 A.M.-4 P.M. at the Smyrna Community Center in Smyrna, Georgia. Main themes are '*Animal House*' (any car named after a Firebird, Barracuda, Viper, Impala, etc.) and '*Big, Ugly cars*' (If it's huge, hideous, and sucks gas, it's in!). For info, contact Paul Wehner 2459 Jacks View CT Snellville, GA 30078 (770)985-5953.
- *December 5th & 6th-9th Annual Street Cars of Desire Car show and Automotive flea market* at the MD state fairgrounds, Cow Palace in Timonium, MD. Call (410)876-3842 (until 9 P.M. .S.T.) for further info.

CLASSIFIEDS

WANTED- *Removable hardtop from any XKE Jaguar convertible kit.* Also, complete BMW Isetta kit wanted (any manufacturer). Contact Tom Gunshannon at 579 Washington Avenue Larksville, PA 18651 (717)288-8888.

WANTED- (7) *Johan showcases.* Will trade for new Revell-Monogram cases. Also need a set of *Revell-Monogram Chevy Rally wheels.* Call Dave Lewis at (410)484-5070.

WANTED- *Pontiac parts (a man after my own heart!):* '70 GTO tail light lenses, (2) sets of Rally II wheels, (1) set of 8-lug aluminum wheels, '69 Grand Prix rear bumper, chassis, parking and tail lights, (3) Pontiac engines, nose piece for a '65 Pontiac, and a front bumper, grille, and rear bumper for a '67 Corvette. All parts 1/25th scale, please! Call Joe Bush at (410)592-7926.

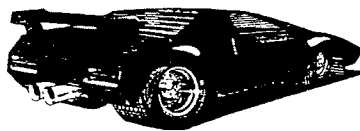
WANTED- Magazine articles or what have you on *Arnie 'The Farmer' Beswick's racing Pontiacs.* Will carefully copy and return! Contact Tim Sickle at (301)249-3830.

FOR SALE- Metal desk with measurements of 66" wide by 18" deep by 29" high. Perfect modeling table, \$25.00. Call Tim Powers at the number above.

WANTED- Old redline Hot Wheels cars, buttons, accessories, tracksets, catalogs, Georgia Highway Patrol police car pictures, Monogram show gum cards. Contact Kenneth King, 2803 Dee Peppers Drive, Knoxville, TN 37931 or e-mail to cking@usit.net.

Anyone having an item for the newsletter, whether it is a Bit, a Piece or even a Classified, it can be included by contacting one of the individuals listed below:

Timothy C. Sickle
15905 Ark Court
Bowie, Maryland 20716
(301)249-3830



Norman F. Veber
317 Roosevelt Ave., S.W.
Glen Burnie, Maryland 21061
(410)768-3648